



TEXAS A&M FOREST SERVICE

WILDFIRE RISK ASSESSMENT PORTAL

BASIC USER GUIDE



Contents

Preface 3

 Compatibility 3

 Support..... 3

 Feedback 3

Overview 3

Accessing the Basic Viewer 4

Using the Basic Viewer 4

 Navigation 5

 Map Themes 6

 Layers 6

 Basemaps 6

 Reference 6

 Map Tools..... 7

 Identify 7

 Measure 8

 Swipe 9

 Print..... 10

 What’s Your Risk? 11

Preface

The Texas Wildfire Risk Assessment Portal's Risk Explorer Basic Viewer can be found at <https://texaswildfirerisk.com/> by selecting "Launch Risk Explorer." If you are interested in additional features, registration for the Advanced Viewer and approval by an administrator are required.

Compatibility

TxWRAP is accessible using Microsoft Internet Explorer (11 or higher), Mozilla Firefox, Google Chrome, or Apple Safari. It is recommended that Chrome be used with the application to optimize performance.

The minimum recommended screen resolution is 1024 x 768.

Support

The [Support](#) page is accessible from the homepage and provides access to documentation, reference information, and help desk contact information.

Feedback

Texas A&M Forest Service invites users to provide feedback on TXWRAP. Please provide your comments and suggestions for improvement via the [Contact](#) form.

Overview

The Texas Wildfire Risk Explorer (known as the "Risk Explorer") is the primary mechanism for Texas A&M Forest Service to deploy wildfire risk information and create awareness about wildfire issues across the state. This application is tailored to support specific workflow and information requirements for the public, local community groups, private landowners, government officials, hazard-mitigation planners, and wildland fire managers. The application also provides the baseline information needed to support mitigation and prevention efforts across the state.

- For more information about TXWRAP, visit the [Overview](#) section in the Support page.
- For more information about the functionalities and capabilities of the Basic Viewer and the Advanced Viewer, click the **Learn More about Basic vs. Advanced** link in the **Choose a Viewer** modal displayed once [Launch Risk Explorer](#) is selected.

	BASIC	ADVANCED
Create a free account to request access to the Advanced Viewer.		
Assess wildfire risk at your location	✓	✓
Download a wildfire risk assessment report for your location	✓	✓
View wildfire map layers	✓	✓
Navigate the map and inspect pertinent geospatial data	✓	✓
Print maps of wildfire risk	✓	✓
Create and manage your areas of interest or project boundaries	✗	✓
Upload shapefiles representing your areas of interest or projects	✗	✓
Create an area of interest from an existing reference layer feature	✗	✓
Generate a risk summary report for an area of interest	✗	✓
Download an editable summary report to be used for Community Wildfire Protection Plan (CWPP) development	✗	✓
Export a map document and GIS data (Esri File Geodatabase) for your area of interest	✗	✓

Figure 1. Comparing the Basic and the Advanced Viewers

Accessing the Basic Viewer

To access the TXWRAP's Risk Explorer Basic Viewer:

1. Open a compatible browser and navigate to <https://texaswildfirerisk.com/>.
2. Select **Launch Risk Explorer** and click **Enter to access the Basic Viewer**

Alternatively, you have the option to register for an advanced user account by selecting **Create an Account**.

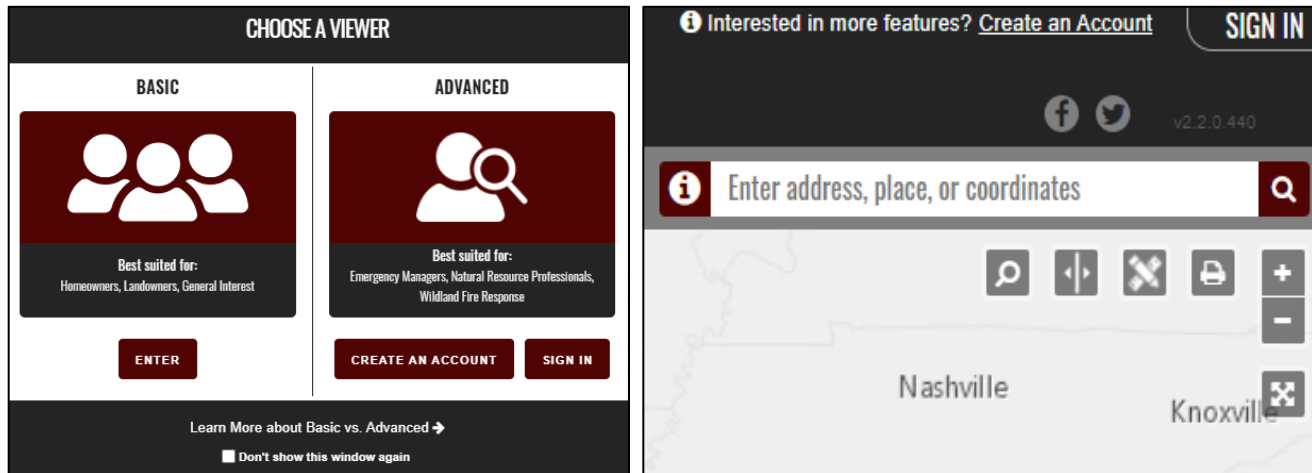


Figure 2. Accessing the Viewers

Using the Basic Viewer

The **Basic Viewer** is a web-mapping application designed to let users zoom to a place of interest, explore map themes, and quickly identify areas where fire potential exists in relationship to homes or other valued assets. The featured tool in this application is **What's Your Risk**. It allows users to identify wildfire threat for any point of interest on the map.

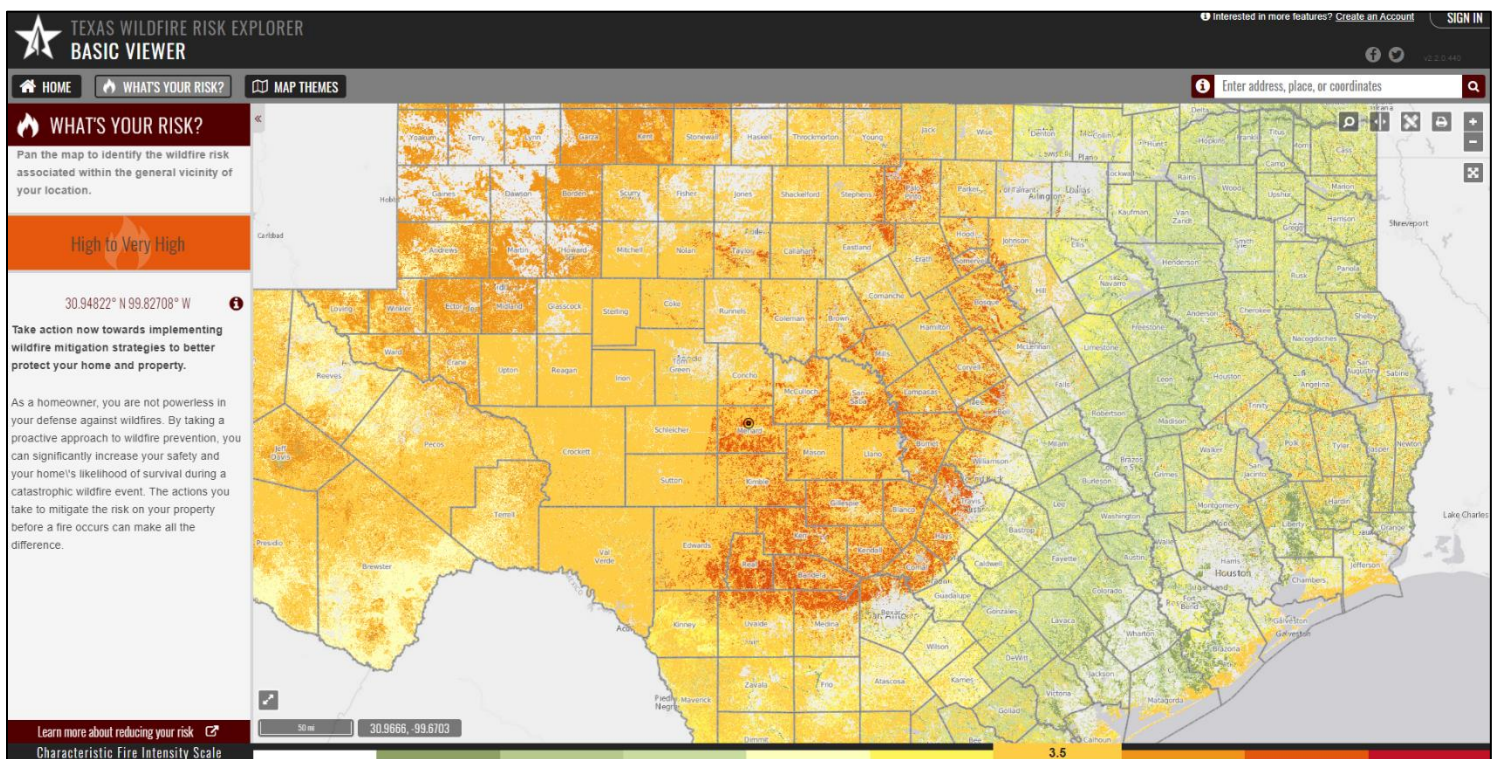


Figure 3. Basic Viewer

Navigation

There are several ways to navigate the map. You can zoom to a specific location by entering an address or you can manually zoom around the map using the zoom buttons or your mouse.

1. Navigating to a Specific Location:



Use the address bar at the top of the screen to enter an address, location, or latitude/longitude coordinates. All places matching that location will be listed. Select from the results to zoom the map to that location.

These following formats are acceptable for latitude and longitude searches: Decimal Degrees, Degrees Minutes Seconds, and Degrees Decimal Minutes:

- 33.7036, -112.1780
- 33.7036 N -112.1780 W
- 33° 42.22' N, 112° 10.68' W
- 33° 42' 12.96" N 112° 10' 40.8" W
- 33 42' 12.96" N 112 10' 40.8" W
- -112.1780 W, 33.7036 N
- 112° 10' 40.8" W 33° 42' 12.96" N
- 112 10' 40.8" W 33 42' 12.96" N

To type the degree symbol (°)

- PC: [Alt + 0176] or [Alt + 248]
- Mac: [Option + Shift + 8]

2. Zooming and Panning:

Manually navigate by using the mouse or the navigation controls provided by the application:

- Navigation controls:



Zoom In/Out



Full extent

- Mouse controls:
 - Pan: Click and drag map
 - Incremental Zoom: Use mouse center scroll wheel
 - Zoom in and center: Double click the map

Map Themes

The Map Themes button allows you to view key maps spatial data layers associated with the Texas Wildfire Risk Assessment, basemaps, and reference data layers. They are organized in the left toolbar as follows:

Layers

The maps in this group are considered active map layers because you can only view one layer at a time – the one that is "active" or selected. To view and "active" layer, simply click on it to select it.

Click  for a description of each layer.

Adjust the transparency of the layers group by using the transparency slider at the top of the group.

Turn layers on and off by clicking on the layer name or using the activate switch at the far right of the transparency slider.

Legends for all layers are available at the bottom of the page.

Basemaps

You can view different basemaps with the wildfire risk layers.

Several options exist:

- ESRI Light Gray
- ESRI Topo
- Bing Aerial
- Bing Streets

To view a basemap, simply click on it to select it.

Click  for a description of each basemap.

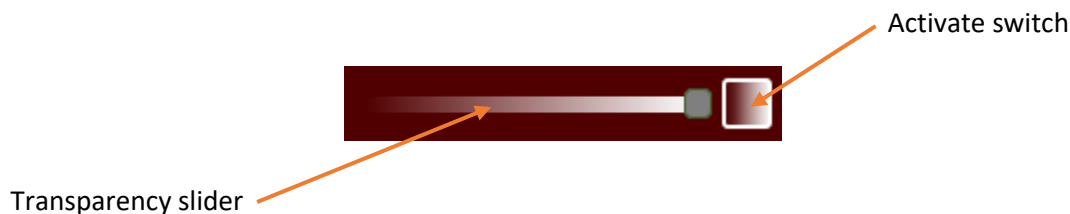
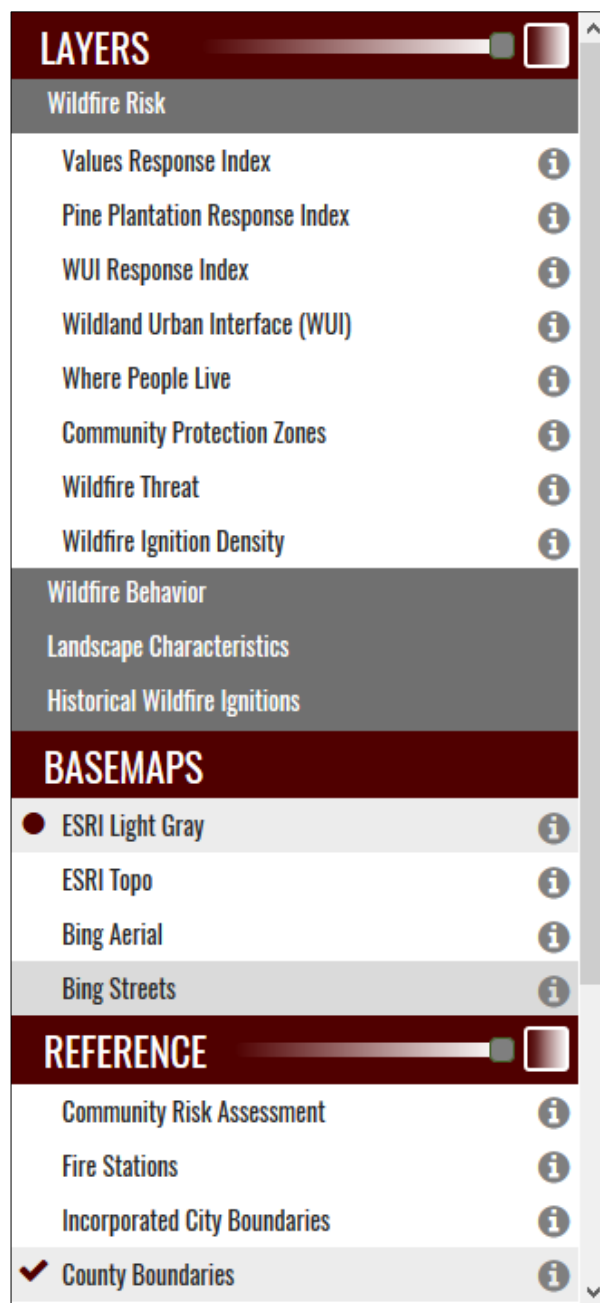
Reference

The purpose of this group of layers is to provide supporting reference information and context for viewing in conjunction with the risk assessment layers. Reference layers may include administrative boundaries, public facilities, information related to wildfire suppression, mitigation and prevention, and other natural resource layers.

Click  for a description of each layer.

Adjust the transparency of the reference layers group by using the transparency slider at the top of the group.

Turn each reference layer on and off by clicking on the layer name. You can also hide all layers by using the activate switch at the far right of the transparency slider.



Map Tools

Tools are provided that allow you to view and explore the map layers in more detail. These include:



Identify - use this tool to show the values of several map layers for a specific user defined location.



Measure – use this tool to measure distance or area on the map.



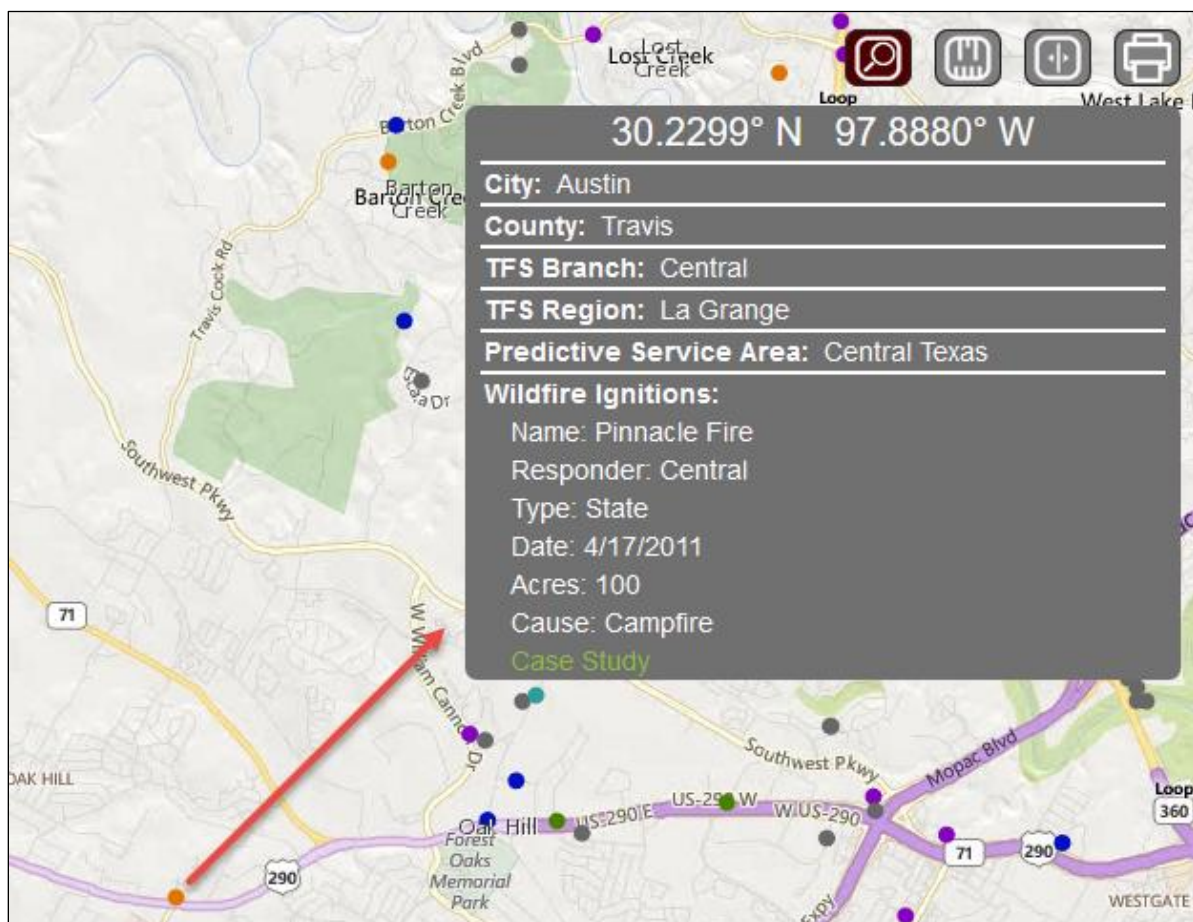
Swipe – use this tool to visually compare two layers by choosing a layer to swipe over the top of the active layer.



Print – use this tool to create a simple map matching the contents of your browser.

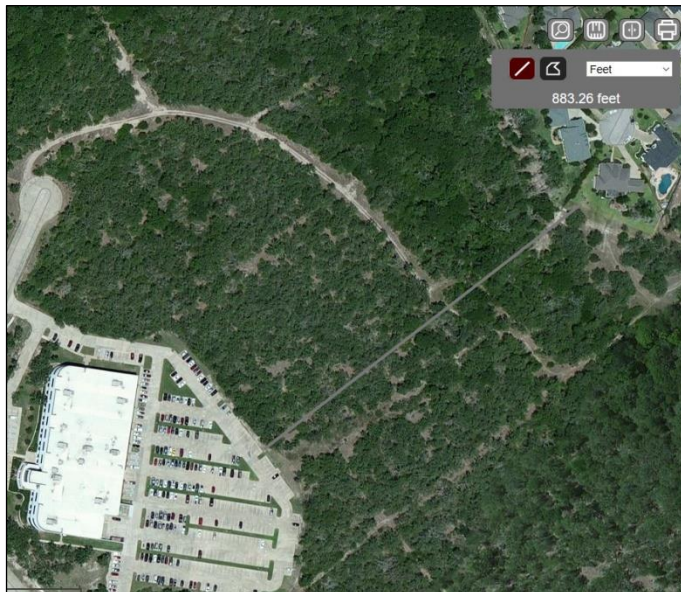
Identify

Click the Identify button to activate the tool. Click in a location of your interest in the map. Information displayed by the tool includes attributes from the layers listed under the Historical Wildfire Ignitions group and the majority of the reference layers for the selected location. Click the identify button to dismiss the window and disable the tool.

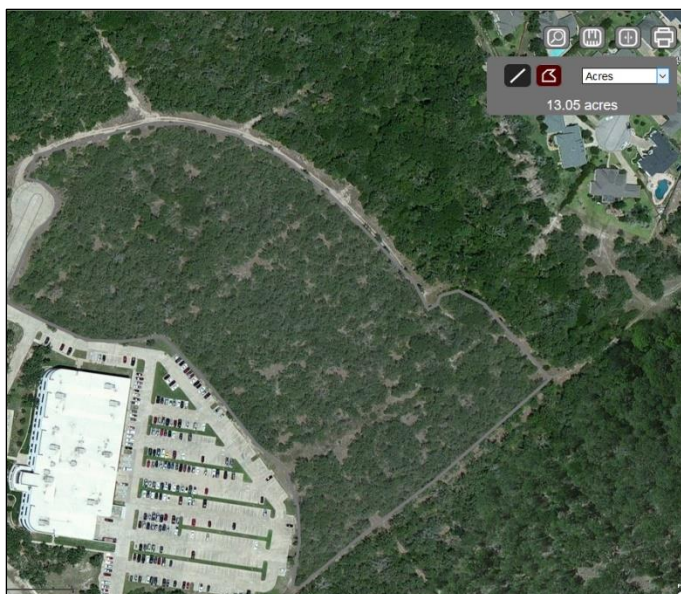


Measure

Click the Measure button to activate the tool. The measurement tools allow you to measure distance or area in the map. You may specify units using the dropdown menu. Units may be specified before or after measuring. Click the measure button to dismiss the window and disable the tool.



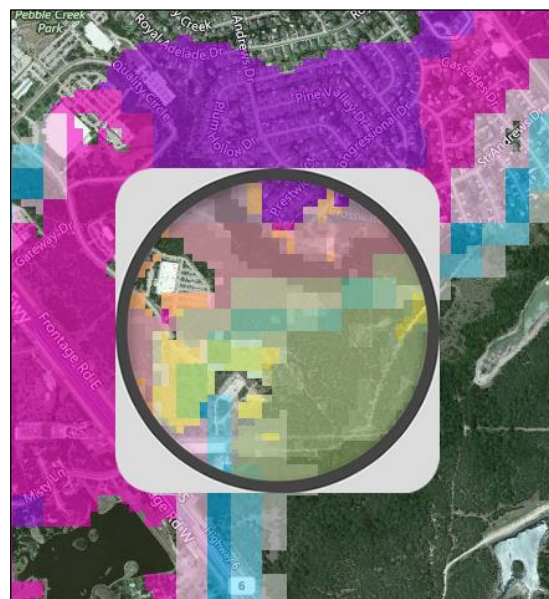
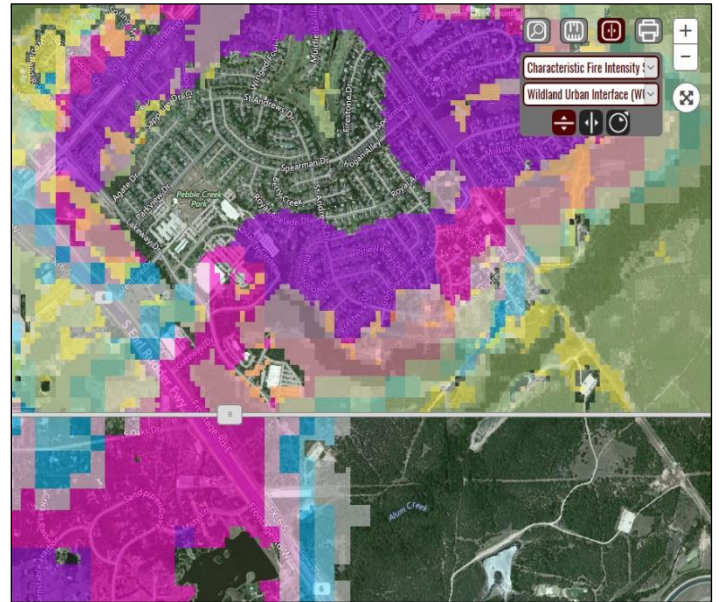
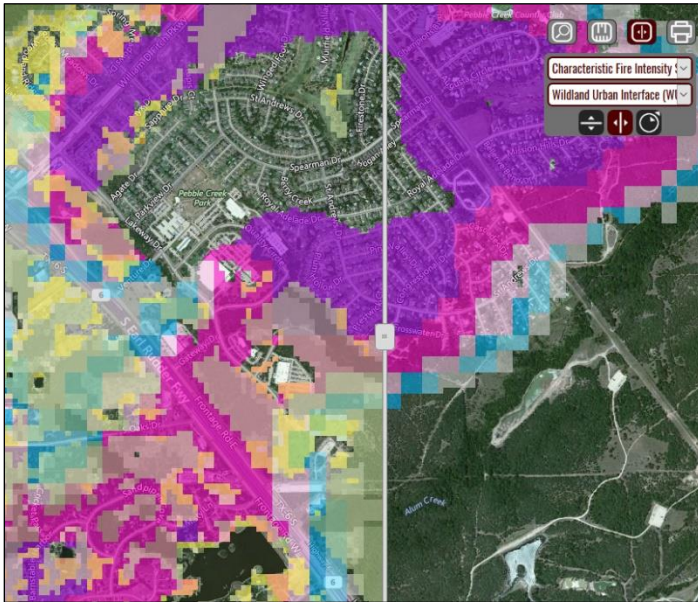
Feet	▼
Feet	
Kilometers	
Meters	
Miles	
Nautical Miles	
Yards	



Acres	▼
Acres	
Hectares	
Sq Feet	
Sq Kilometers	
Sq Meters	
Sq Miles	
Sq Yards	

Swipe

Click the Swipe button to activate the tool. The Swipe tool can be used to compare one layer with another. The “bottom” layer is the active layer selected in Map Themes. You can also use the Tool dropdown to change select a different layer. The “top” layer will be used as the “swipe” layer. The widget provides horizontal, vertical, and scope viewing modes. Click the swipe button to dismiss the window and disable swiping.



Print

The Print tool allows you to create a simple map matching the contents of the map. Click the Print button to open the Print Map window. You can enter a Title and Subtitle to customize it and/or click print to proceed.

PRINT MAP

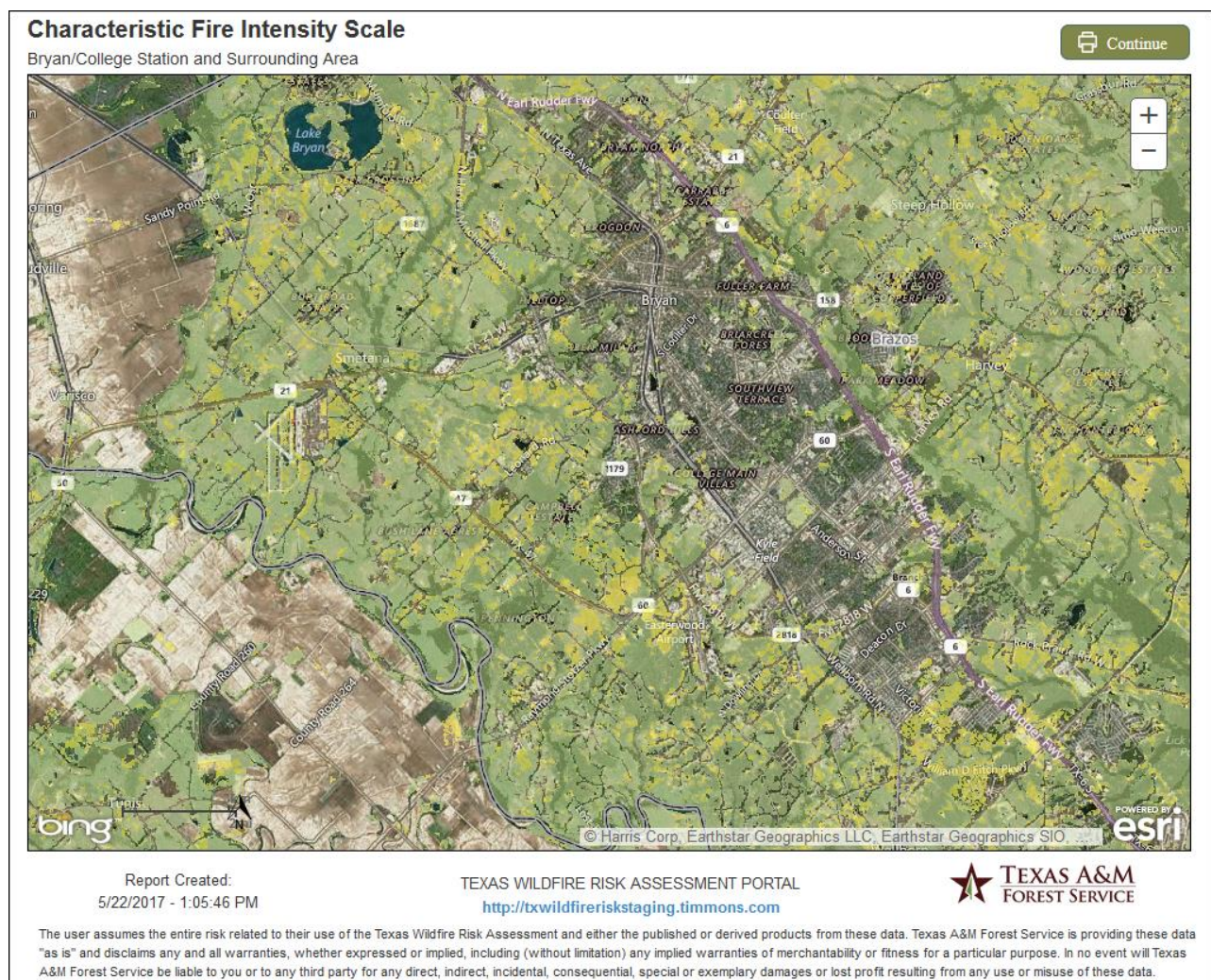
Title

Subtitle

Limit of 130 characters...

PRINT **CANCEL**

The next window provides capabilities to zoom and pan the map prior to printing. Note the legend will always appear on the second page. Once you are ready to print the map click continue.



What's Your Risk?

The “**What's Your Risk?**” tool provides you the capability to select a location on the map and calculate the potential fire intensity for that location. It is intended to inform homeowners and business owners of the impending risk for their location based on surrounding conditions.

Risk is derived from the **Fire Intensity Scale**, which identifies areas of significant fire behavior potential influenced by fuel hazards, high to extreme weather conditions, and topography.

The information is summarized for your review by using a quarter-mile buffer because risk from wildfire is dependent on the conditions surrounding a location, not the conditions at the specific site.

Fire Intensity Scale does not incorporate historical occurrence information. It only evaluates the potential fire behavior for an area, regardless if any fires have occurred there in the past. This additional information allows mitigation planners to quickly identify areas where dangerous fire behavior potential exists in relationship to homes and other valued assets.

Use the [Search](#) or map [navigation](#) tools to identify a specific location of interest, such as your home or place of work. The tool will provide a measure of the wildfire risk associated within the general vicinity of your location and highlight how critical it is for you to implement wildfire mitigation strategies to better protect your home and property. A link - **Learn more about reducing your risk** – is also provided to connect you with the Texas A&M Forest Service Mitigation and Prevention website where you can find detailed information about the actions you can take to mitigate the risk to your property.

Note: It is highly recommended to contact your local Wildland Urban Specialist to *obtain more detailed information*.

