

SOUTHERN
— GROUP OF STATE —
FORESTERS

WILDFIRE RISK ASSESSMENT PORTAL

BASIC
USER GUIDE



Contents

Preface	3
Compatibility.....	3
Support	3
Feedback.....	3
Overview	3
Accessing the Basic Viewer	4
Using the Basic Viewer.....	4
Navigation	5
Map Themes	6
Layers	6
Basemaps.....	6
Reference	6
Map Tools.....	7
Identify.....	7
Measure	8
Swipe.....	9
Print.....	10
What’s Your Risk?.....	11

Preface

The Southern Wildfire Risk Assessment Portal’s (SouthWRAP) Risk Explorer Basic Viewer can be found at <https://southernwildfirerisk.com/> by selecting “Launch Risk Explorer.” If you are interested in additional features, registration for the Advanced Viewer and approval by an administrator are required.

Compatibility

SouthWRAP is accessible using Microsoft Internet Explorer (11 or higher), Mozilla Firefox, Google Chrome, or Apple Safari. It is recommended that Chrome be used with the application to optimize performance.

The minimum recommended screen resolution is 1024 x 768.

Support

The **Support** page is accessible from the homepage and provides access to documentation, reference information, and help desk contact information.

Feedback

The Southern Group of State Foresters invites users to provide feedback on SouthWRAP. Please provide your comments and suggestions for improvement via the **Contact** form.

Overview

The Southern Wildfire Risk Explorer (known as the “Risk Explorer”) is the primary mechanism for the Southern Group of State Foresters to deploy wildfire risk information and create awareness about wildfire issues across the South. This application is tailored to support specific workflow and information requirements for the public, local community groups, private landowners, government officials, hazard-mitigation planners, and wildland fire managers. The application also provides the baseline information needed to support mitigation and prevention efforts across the state.

- For more information about SouthWRAP, visit the **About** page.
- For more information about the functionalities and capabilities of the Basic Viewer and the Advanced Viewer (Figure 1), click the **Learn More about Basic vs. Advanced** link in the **Choose a Viewer** modal displayed once **Launch Risk Explorer** is selected.

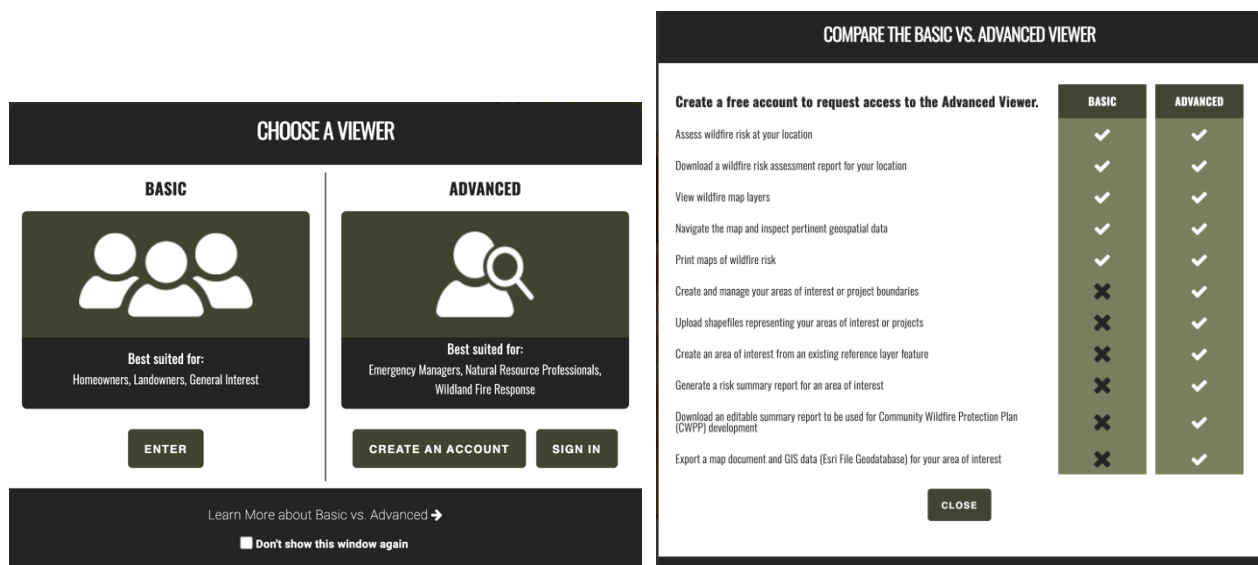


Figure 1. Comparing the Basic and the Advanced Viewers

Accessing the Basic Viewer

To access the SouthWRAP's Risk Explorer Basic Viewer:

1. Open a compatible browser and navigate to <https://southernwildfirerisk.com/>.
2. Select **Launch Risk Explorer** and click **Enter** to access the **Basic Viewer** (Figure 2).

Alternatively, you have the option to register for an advanced user account by selecting **Create an Account**.

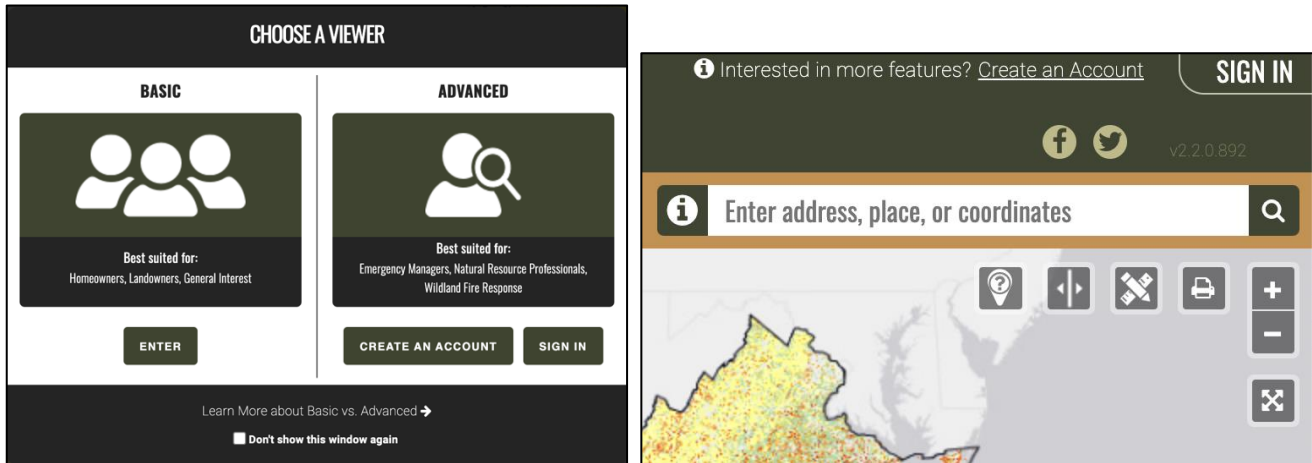


Figure 2. Accessing the Viewers

Using the Basic Viewer

The **Basic Viewer** is a web-mapping application designed to let users zoom to a place of interest, explore map themes, and quickly identify areas where fire potential exists in relationship to homes or other valued assets. The featured tool in this application is **What's Your Risk**. It allows users to identify the wildfire threat for any point of interest on the map (Figure 3).

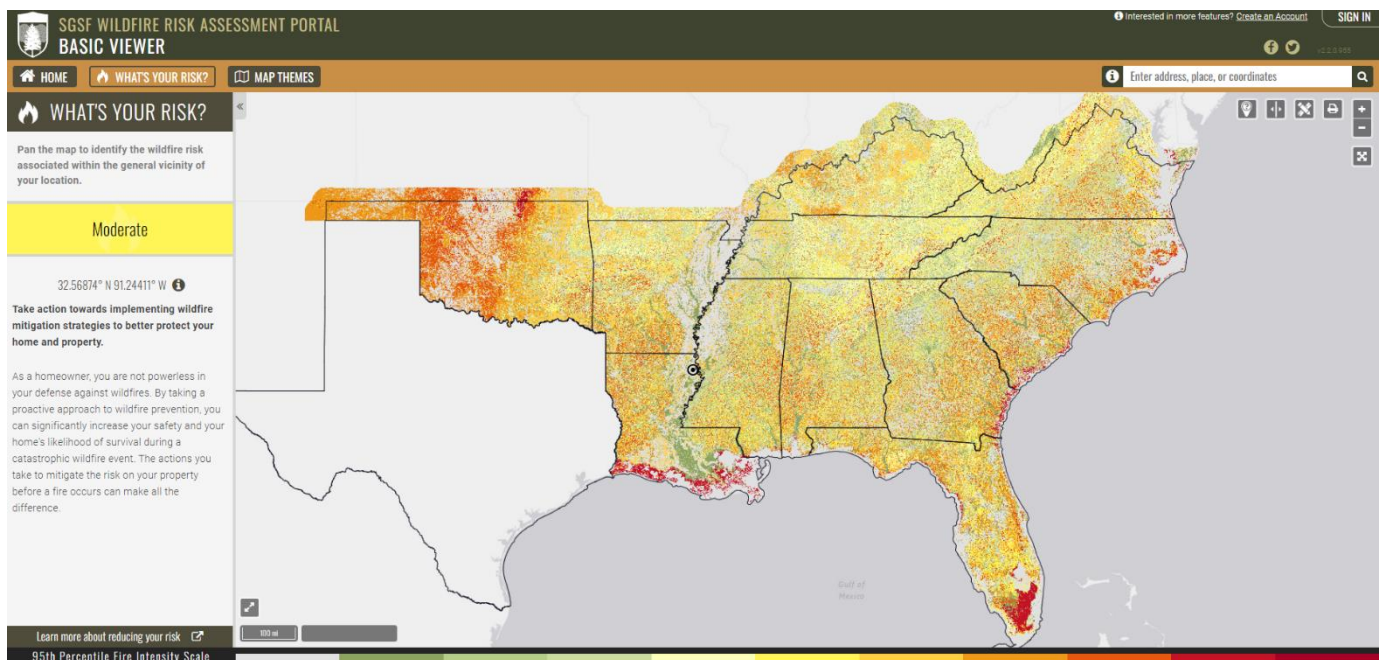


Figure 3. Basic Viewer

Navigation

There are several ways to navigate the map. You can zoom to a specific location by entering an address or you can manually zoom around the map using the zoom buttons or your mouse.

1. Navigating to a Specific Location:



Use the address bar at the top of the screen to enter an address, location, or latitude/longitude coordinates. All places matching that location will be listed. Select from the results to zoom the map to that location.

These following formats are acceptable for latitude and longitude searches: Decimal Degrees, Degrees Minutes Seconds, and Degrees Decimal Minutes:

- 33.7036, -112.1780
- 33.7036 N -112.1780 W
- 33° 42.22' N, 112° 10.68' W
- 33° 42' 12.96" N 112° 10' 40.8" W
- 33 42' 12.96" N 112 10' 40.8" W
- -112.1780 W, 33.7036 N
- 112° 10' 40.8" W 33° 42' 12.96" N
- 112 10' 40.8" W 33 42' 12.96" N

To type the degree symbol (°)

- PC: [Alt + 0176] or [Alt + 248]
- Mac: [Option + Shift + 8]

2. Zooming and Panning:

Manually navigate by using the mouse or the navigation controls provided by the application:

- Navigation controls:



Zoom In/Out



Full extent

- Mouse controls:
 - Pan: Click and drag map
 - Incremental Zoom: Use mouse center scroll wheel
 - Zoom in: Double click the map

Map Themes

The Map Themes button allows you to view key maps, spatial data layers associated with the Southern Wildfire Risk Assessment, basemaps, and reference data layers. They are organized in the left toolbar as follows:

Layers

The maps in this group are considered active map layers because you can only view one layer at a time – the one that is "active" or selected. To view an "active" layer, simply click on it to select it.

Click  for a description of each layer.

Adjust the opacity of the layers group by using the opacity slider at the top of the group.

Turn layers on and off by clicking on the layer name or using the activate switch at the far right of the opacity slider.


Legends for all layers are available at the bottom of the page.

Basemaps

You can view different basemaps with the wildfire risk layers.

Several options exist:

- ESRI Light Gray
- ESRI Topo
- Bing Aerial
- Bing Streets

To view a basemap, simply click on it to select it. Click  for a description of each basemap.

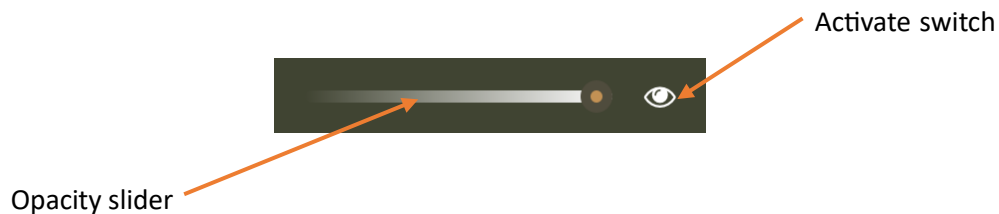
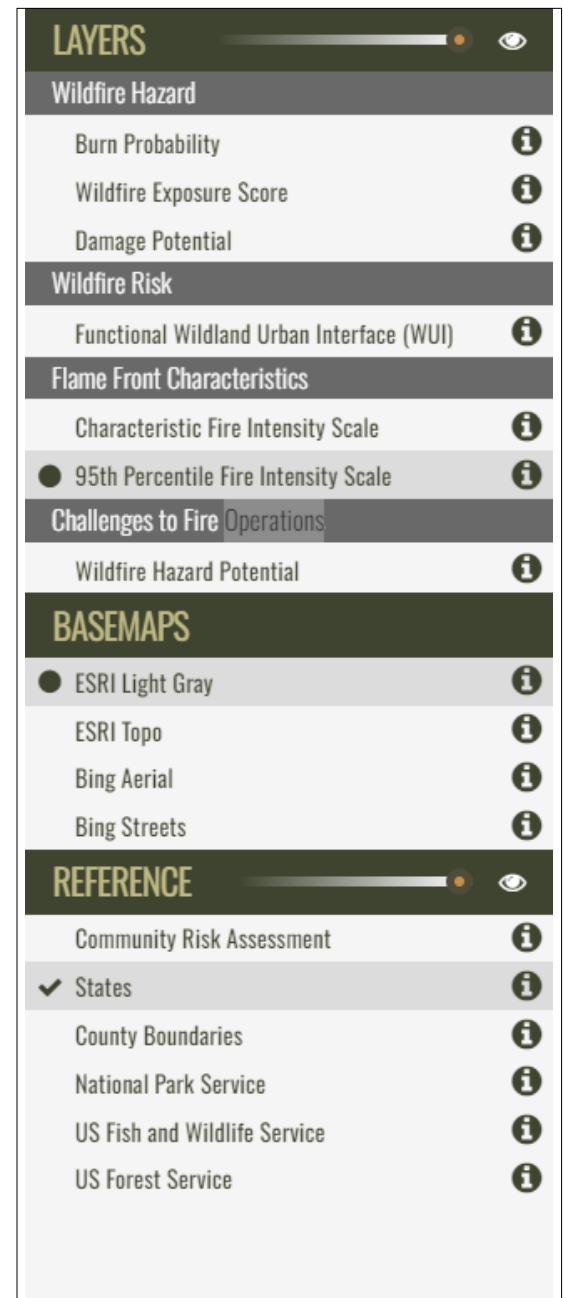
Reference

The purpose of this group of layers is to provide supporting reference information and context for viewing in conjunction with the risk assessment layers. Reference layers may include administrative boundaries, public facilities, information related to wildfire suppression, mitigation and prevention, and other natural resource layers.

Click  for a description of each layer.

Adjust the opacity of the reference layers group by using the opacity slider at the top of the group.

Turn each reference layer on and off by clicking on the layer name. You can also hide all layers by using the activate switch at the far right of the opacity slider.



Map Tools

Tools are provided that allow you to view and explore the map layers in more detail. These include:



Identify - use this tool to show the values of several map layers for a specific user defined location.



Measure – use this tool to measure distance or area on the map.



Swipe – use this tool to visually compare two layers by choosing a layer to swipe over the top of the active layer.



Print – use this tool to create a simple map matching the contents of your browser.

Identify

Click the Identify button to activate the tool. Click on a location of your interest in the map. Information displayed by the tool includes attributes from most of the reference layers for the selected location. Click the identify button to dismiss the window and disable the tool.

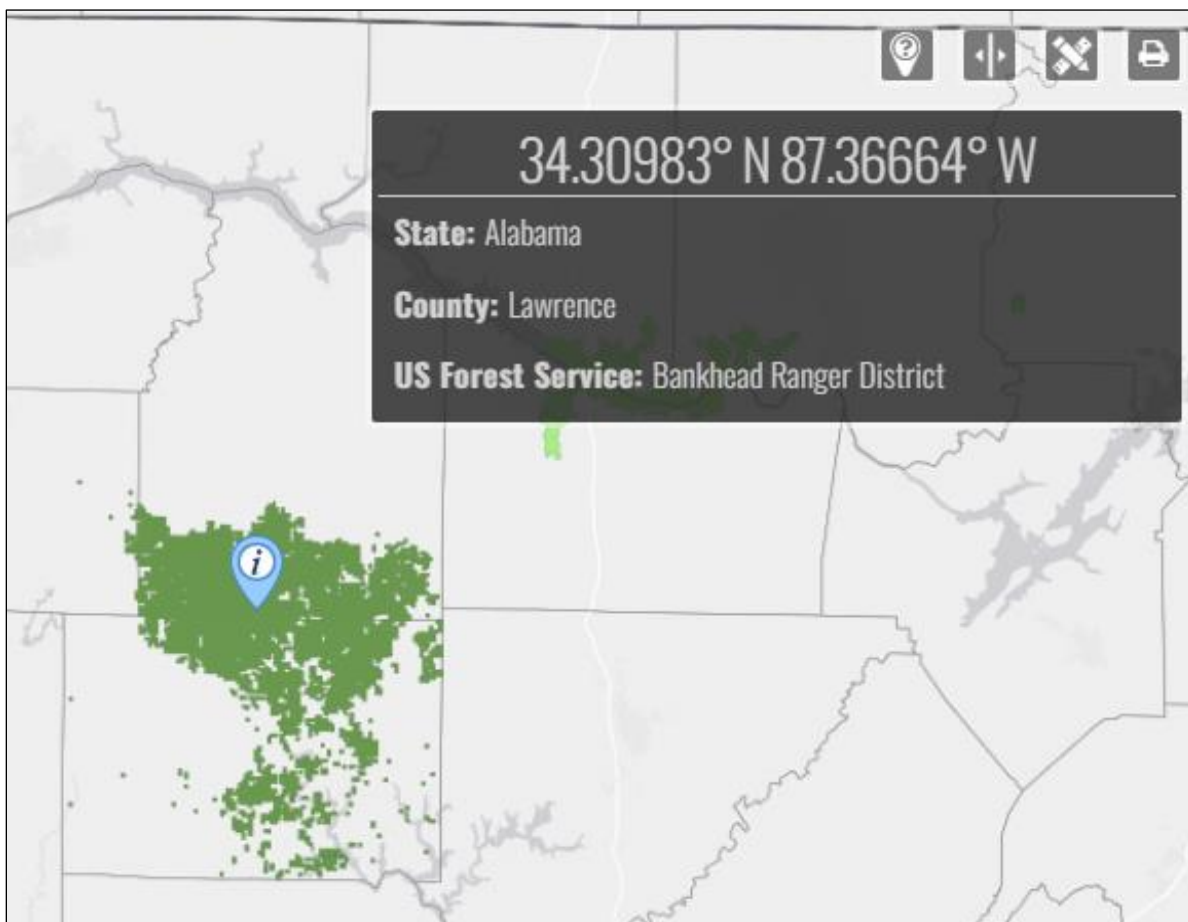


Figure 4. Identify Tool

Measure

Click the Measure button to activate the tool. The measurement tools allow you to measure distance or area in the map. You may specify units using the dropdown menu. Units may be specified before or after measuring. Double click to end a line/path or close a polygon. Click the measure button to dismiss the window and disable the tool.

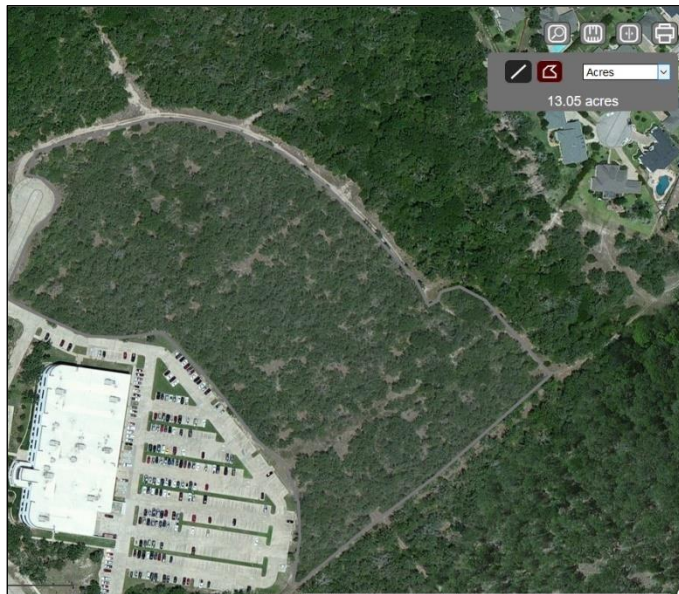
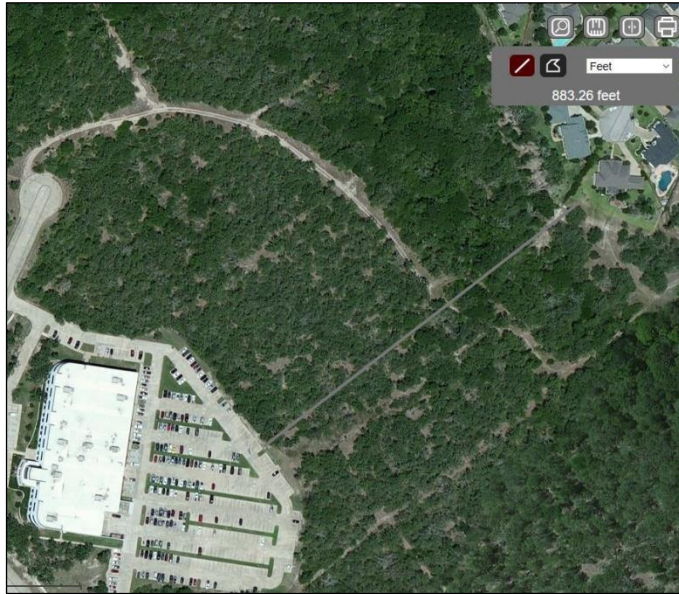


Figure 5. Measure Tool

Swipe

Click the Swipe button to activate the tool. The Swipe tool lets you compare two layers. Use the Tool dropdown menus to select layers of your interest. The layer you choose in the right dropdown will be used as the “swipe” layer. You can view the layers in both horizontal and vertical modes. To turn off the tool, click the Swipe button again.

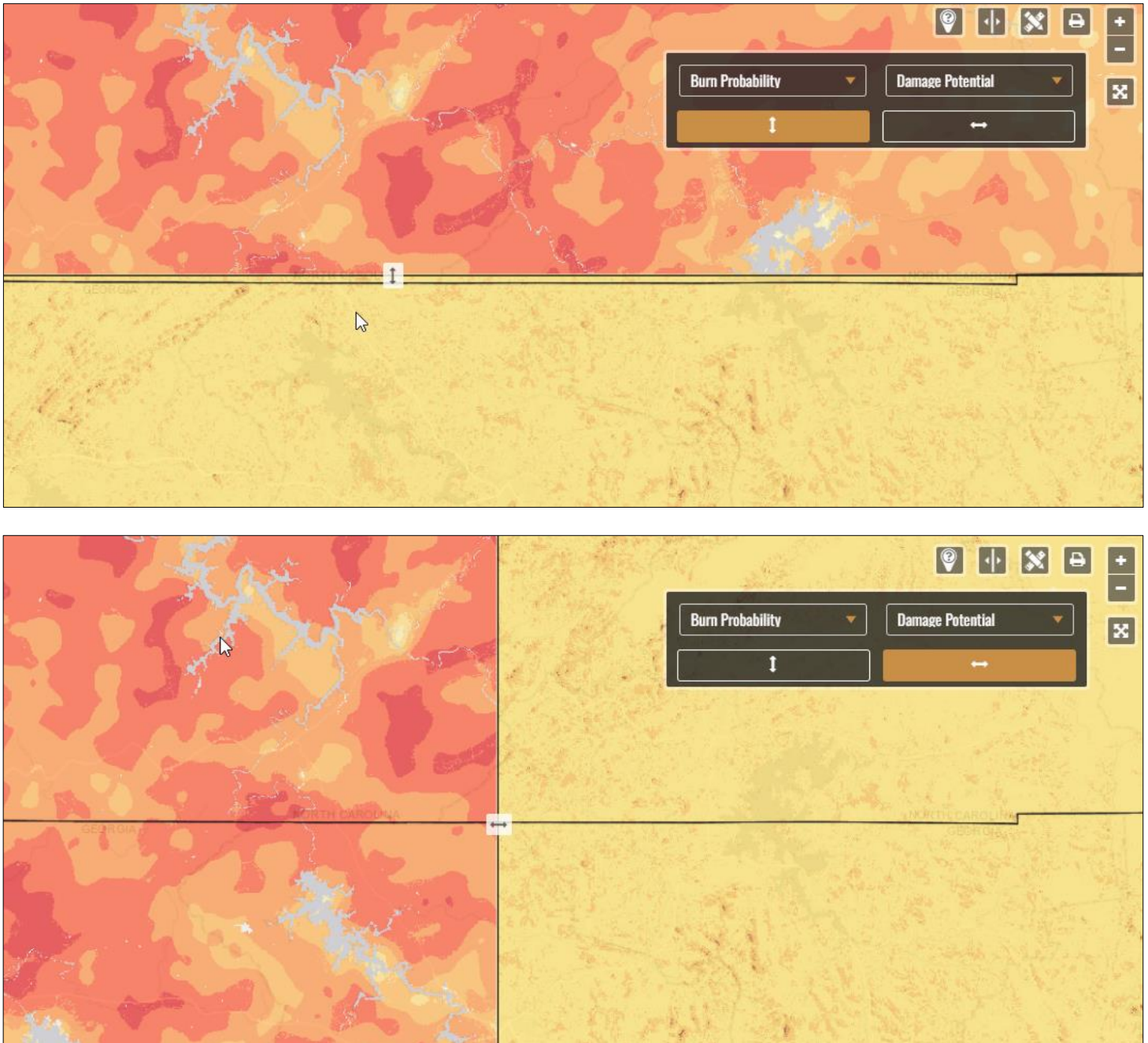
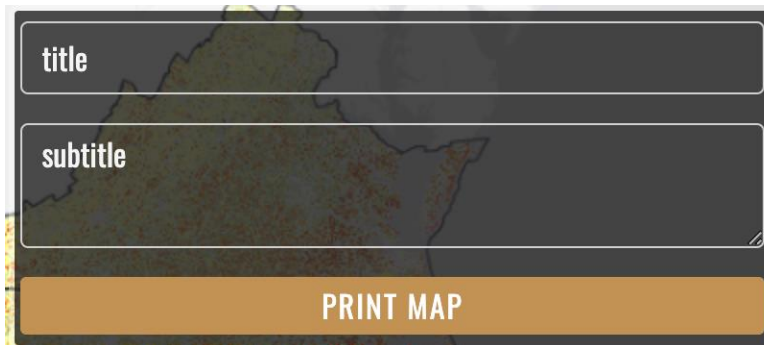


Figure 6. Swipe Tool

Print

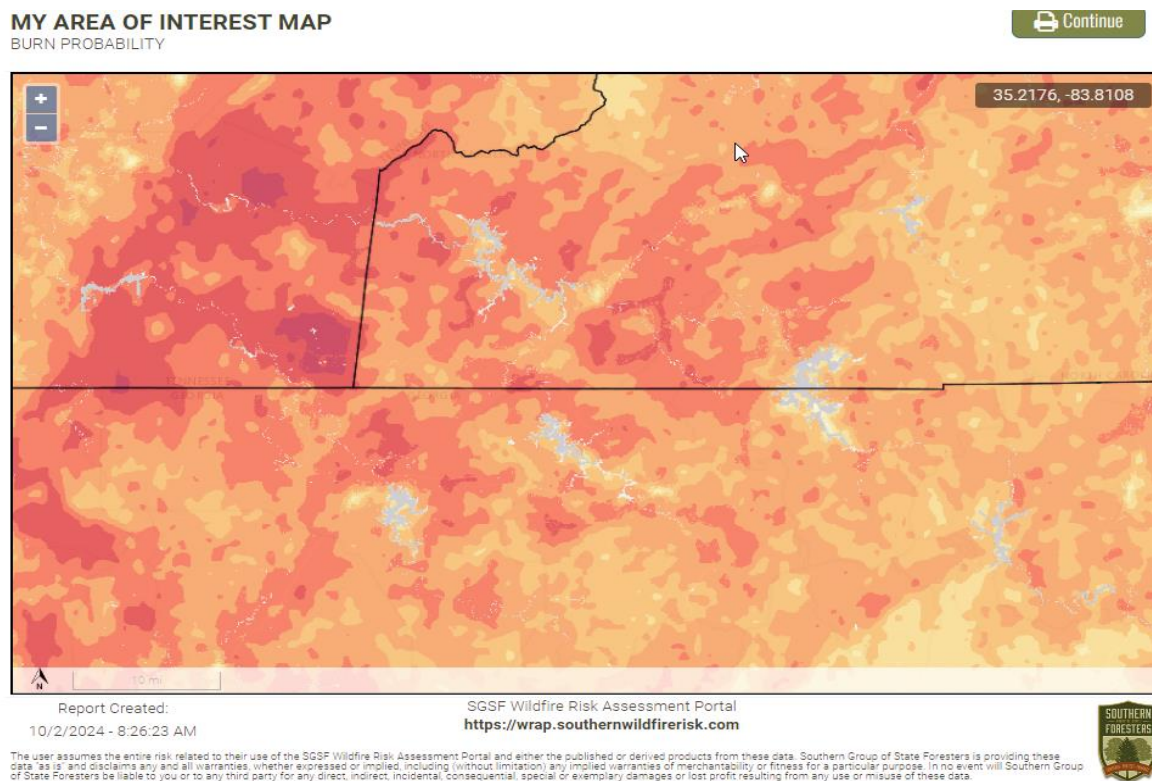
The Print tool allows you to create a simple map matching the contents of the map as seen in the monitor. Click the Print button to open the Print Map window. You can enter a Title and Subtitle to customize it and/or click print to proceed.



The screenshot shows a dark-themed interface for the print tool. It features two text input fields: the top one is labeled 'title' and the bottom one is labeled 'subtitle'. Below these fields is a large, orange button with the text 'PRINT MAP' in white capital letters. The background of the interface shows a faint map of a region.

Figure 7. Print Map Tool Title & Subtitle

The next window provides capabilities to zoom and pan the map prior to printing. Note the legend will always appear on the second page. Once you are ready to print the map click continue.



The screenshot displays the 'MY AREA OF INTEREST MAP' interface. At the top left, it says 'MY AREA OF INTEREST MAP' and 'BURN PROBABILITY'. On the top right, there is a 'Continue' button with a printer icon. The main area is a map showing burn probability with a color scale from yellow (low) to red (high). A black outline indicates the user's area of interest. In the top right corner of the map, the coordinates '35.2176, -83.8108' are displayed. On the left side of the map, there are zoom in (+) and zoom out (-) buttons. At the bottom left, there is a scale bar for 10 miles. Below the map, the text reads: 'Report Created: 10/2/2024 - 8:26:23 AM', 'SGSF Wildfire Risk Assessment Portal', and 'https://wrap.southernwildfirerisk.com'. On the bottom right, there is a logo for 'SOUTHERN FORESTERS'. A small disclaimer is visible at the very bottom of the page.

Figure 8. Print Map Tool Preview

What's Your Risk?

The “**What's Your Risk?**” tool provides the capability to select a location on the map and retrieve the potential fire intensity for that location. It is intended to inform homeowners and business owners of the impending risk for their location based on surrounding conditions.

Risk is derived from the **95th Percentile Fire Intensity Scale**, which identifies areas of significant fire behavior potential of the “average worst” 95th Percentile Fire Intensity Scale at the flaming front of the fire. This is influenced by fuel hazards, high to extreme weather conditions, and topography.

The information is summarized for your review by using a quarter-mile buffer (indicated by the circle around the point) because risk from wildfire is dependent on the conditions surrounding a location, not just the conditions at the specific site.

95th Percentile Fire Intensity Scale does not incorporate historical occurrence information. It only evaluates the potential fire behavior for an area, regardless of any fires that have occurred on that site in the past. This additional information allows mitigation planners to quickly identify areas where dangerous fire behavior potential exists in relation to homes and other valued assets.

Use the [Search](#) or map [navigation](#) tools to identify a specific location of interest, such as your home or place of work. The tool will provide a measure of the wildfire risk associated within the general vicinity of your location and highlight how critical it is for you to implement wildfire mitigation strategies to better protect your home and property. A link - **Learn more about reducing your risk** – is also provided to connect you with the Southern Group of State Foresters website where you can find detailed information about the actions you can take to mitigate the risk to your property.

***Note:** It is highly recommended to contact the local Wildland Urban Interface Coordinator within your Area or Region to obtain more detailed information.*

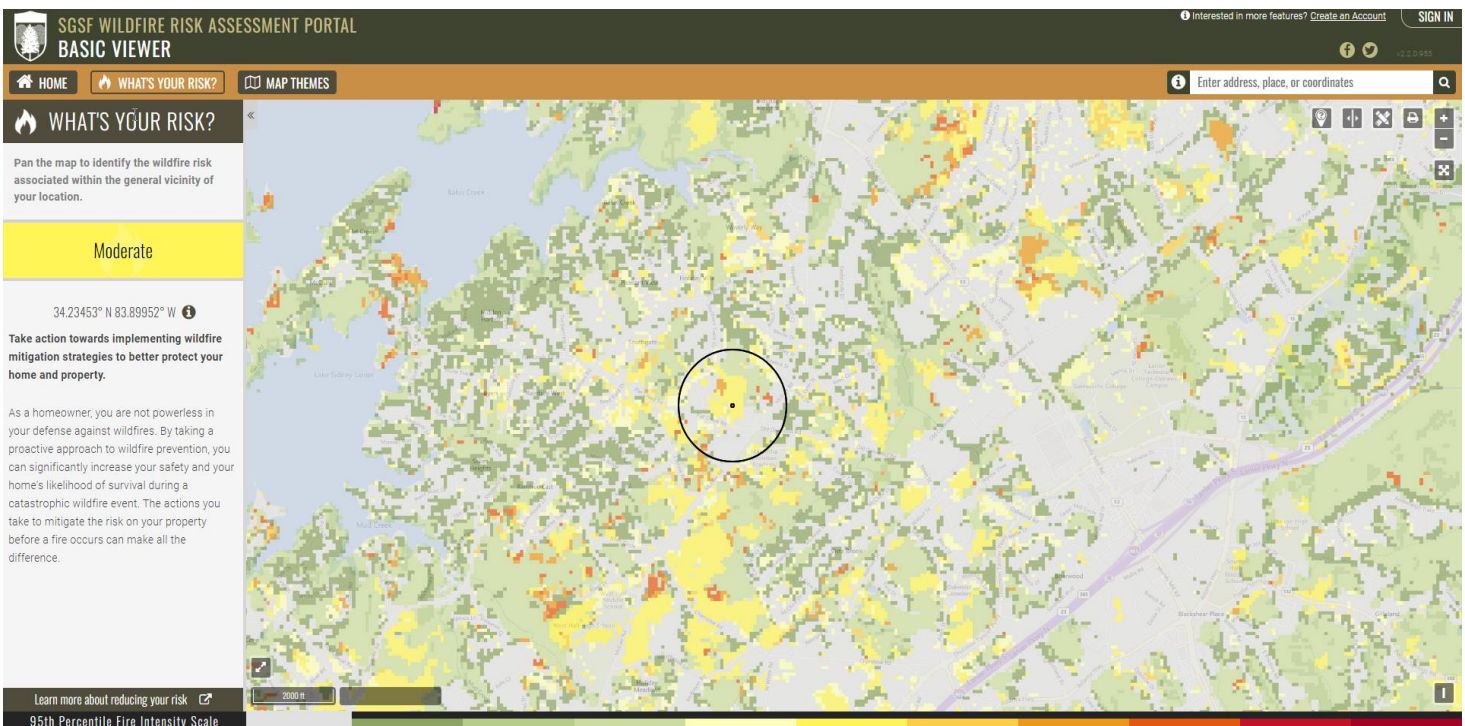


Figure 9. What's Your Risk Tool