



WILDFIRE RISK ASSESSMENT PORTAL

BASIC

USER GUIDE



Contents

Preface	3
Compatibility	3
Support.....	3
Feedback	3
Overview	3
Accessing the Basic Viewer	4
Using the Basic Viewer	4
Navigation	5
Map Themes	6
Layers	6
Basemaps	6
Reference	7
Map Tools.....	7
Assess Your Location	9

Preface

The New Jersey Wildfire Risk Assessment Portal’s Basic Viewer can be found at <https://newjerseywildfirerisk.com> by selecting “Launch Risk Explorer.” If you are interested in additional features, registration for the Advanced Viewer and approval by an administrator are required.

Compatibility

The current version of NJWRAP is compatible with the following browsers, but it is recommended that Google Chrome be used with the application for optimal performance:

- Google Chrome
- Microsoft Edge
- Safari

The minimum recommended screen resolution is 1024 x 768.

Support

- User guides can be found on the [Support](#) page.
- Technical Support can also be found under [Contact](#) or at the bottom of the [Support](#) page

Feedback

New Jersey Forest Service invites users to provide feedback on NJWRAP. Please provide your comments and suggestions for improvement via the [Contact](#) form.

Overview

The New Jersey Wildfire Risk Assessment Portal and Risk Explorer are the primary mechanisms for the New Jersey Forest Fire Service (NJFFS) to deploy wildfire risk information and create awareness about wildfire issues across the state. It comprises a suite of applications tailored to support specific workflow and information requirements for the public, local community groups, private landowners, government officials, hazard mitigation planners, and wildland fire managers. Collectively, these applications will provide the baseline information needed to support mitigation and prevention efforts across the state.

- For more information about NJWRAP, see the [Overview](#).
- For more information about the Basic Viewer and the Advanced Viewer, click the [Learn More about Basic vs. Advanced](#) link in the [Choose a Viewer](#) modal when entering the [Risk Explorer](#).

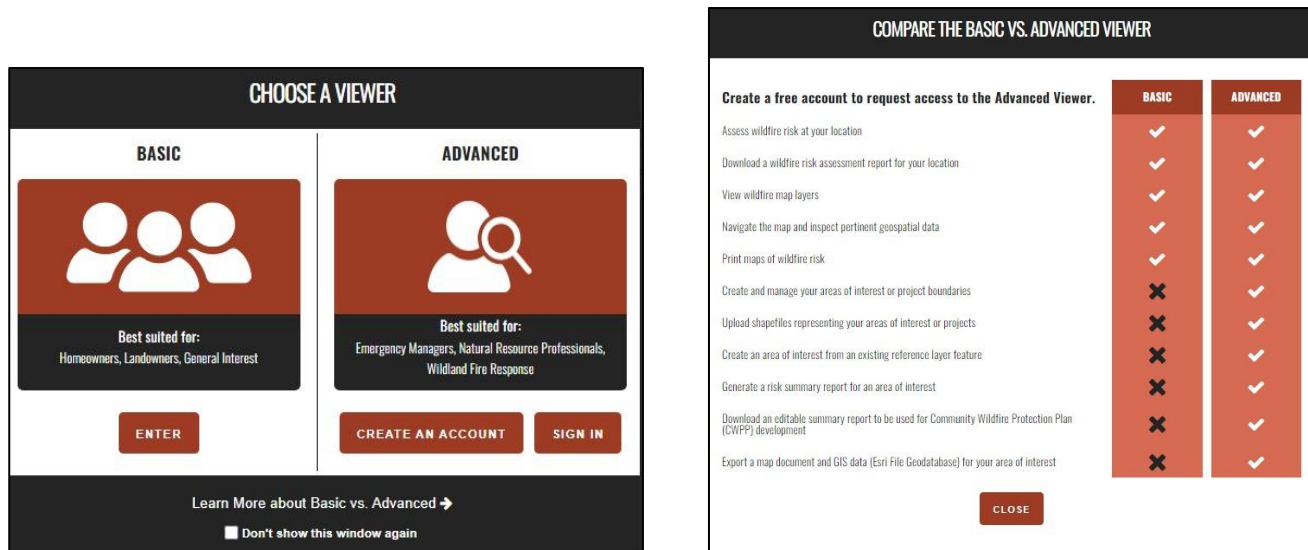


Figure 1. Comparing the Basic and the Advanced Viewers

Accessing the Basic Viewer

To access the NJWRAP Basic Viewer of the Risk Explorer web application:

1. Open a compatible browser while connected to the internet and navigate to <https://newjerseywildfirerisk.com>.
2. Select **Launch Risk Explorer** and choose **Enter** for the **Basic Viewer**
 - a. To access additional features and become an advanced user, register by selecting **Create an Account** under the **Advanced Viewer** or select the **Create an Account** link in the top right corner of the Basic Viewer. After entering contact information and clicking **Create Account**, you will receive an email notification that your registration has been submitted and an administrator has been notified. You will then receive another email notification when your access has been approved.

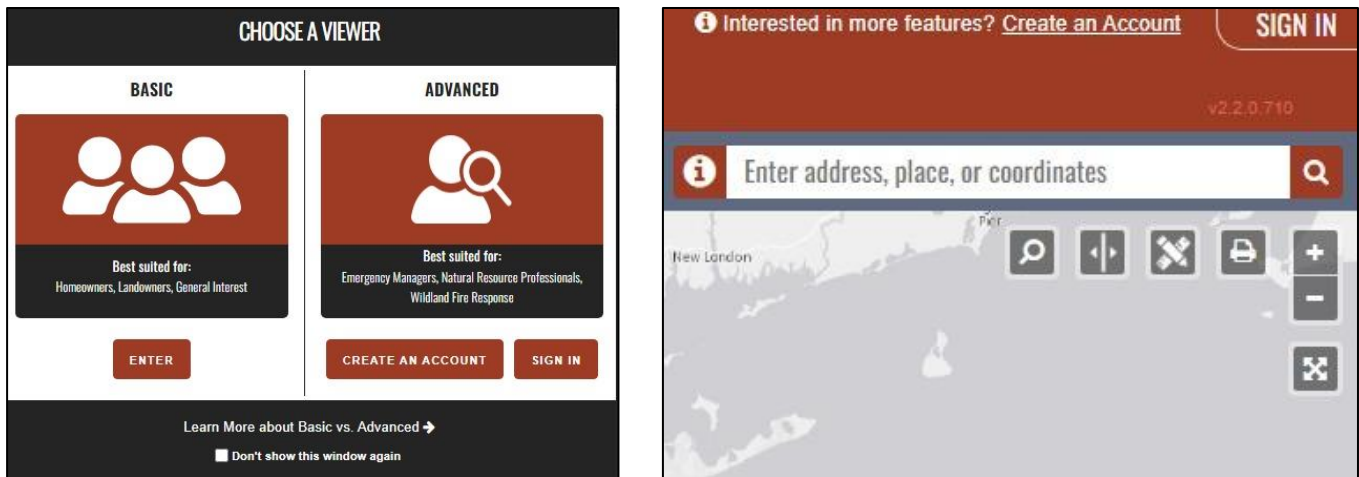


Figure 2. Accessing the Viewers

Using the Basic Viewer

The **Basic Viewer** is a web-mapping application designed to let users zoom to a place of interest, explore map themes, and quickly identify areas where fire potential exists in relationship to homes or other valued assets. The featured tool in this application is **Assess Your Location**. It allows users to identify wildfire threat for any point of interest on the map.

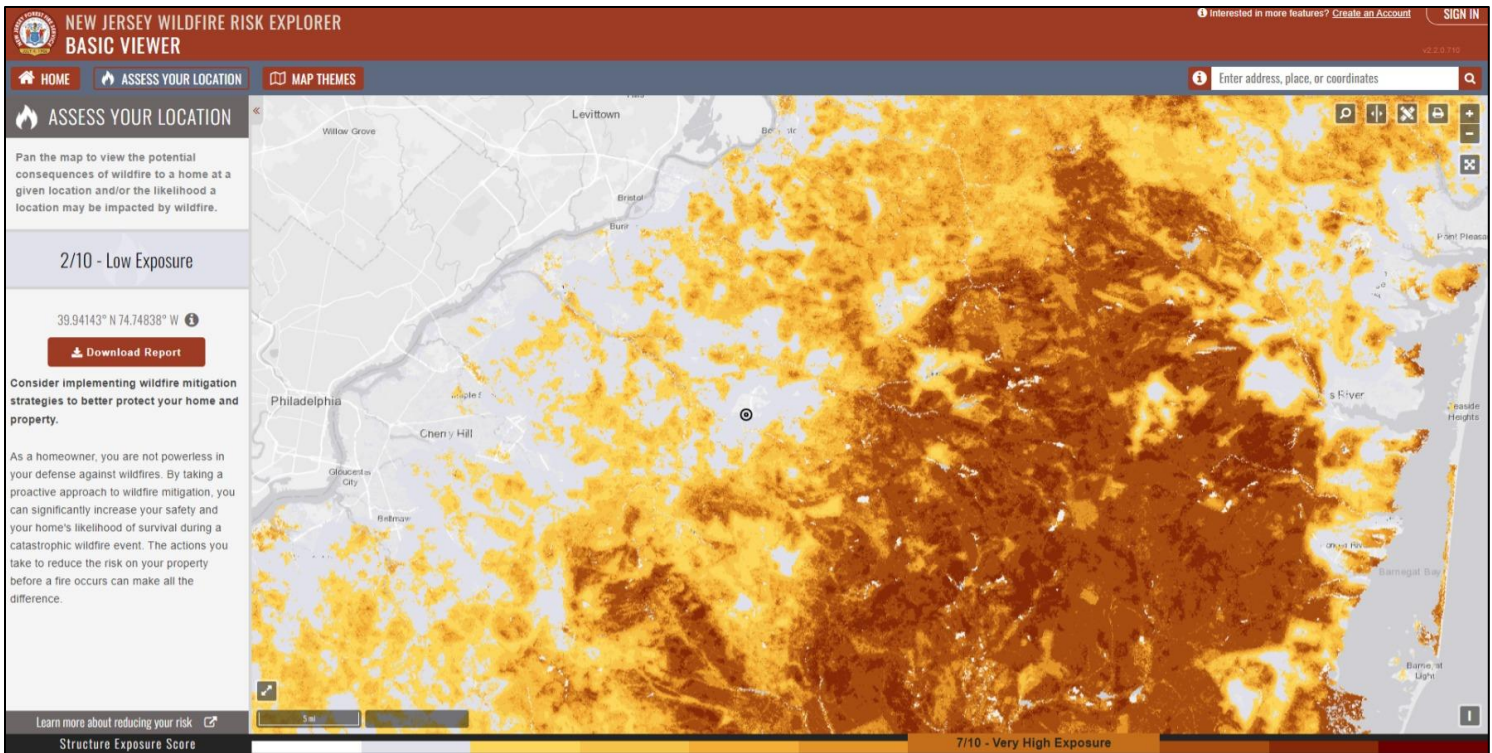


Figure 3. Basic Viewer

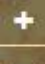

Navigation

There are two ways to navigate the map:

1. **Search for a specific location** by entering an address, location name, or geographic coordinates in this field:



- When you enter a place name or address to search for a specific location, results are presented in the **Search Results** box. Click on any of the results to zoom the map to that location.
- These formats are acceptable for latitude/longitude searches: Decimal Degrees, Degrees Minutes Seconds, and Degrees Decimal Minutes.
 - i. To type the degree symbol (°),
 - On a PC: [Alt + 0176] or [Alt + 248]
 - On a Mac: [Option + Shift + 8]

2. **Manually navigate** using the zoom in/out  and zoom-to-extent  buttons or panning by clicking and dragging with the mouse. Using these tools does *not* clear the most recent search results.

Map Themes

Map themes allow users to view spatial data layers associated with the Wildfire Risk Assessment, basemaps, and reference data layers. They are organized in the left toolbar as follows:



- **Layers**
- **Basemaps**
- **Reference**

- A legend for each of the **Wildfire Layers** is displayed along the bottom of the map when one of those layers is active. For example, where wildfire risk (Risk 4/5) is present, the legend scale ranges from **Low** to **Very High**.

- Adjust the transparency of a layer group using the transparency slider at the top of the group.

- Turn layers on and off by using the activate switch at the far right of the transparency slider.

- Click **i** for a description of each layer:

Figure 4. Map Themes toolbar



Figure 5. Information about the layer can be accessed by clicking on the “i” icon next to the layer

Layers

The raster layers are considered active map layers because you can only view one layer at a time—the one that is "active," or displayed. To view an active layer on the map, click the layer name (e.g., Fire Frequency).

Basemaps

To select or change the basemap, click one of the basemap options below:

- **Light Gray:** A neutral basemap for easily viewing data layers
- **Aerial:** One meter or better satellite and aerial imagery in many parts of the world and lower resolution satellite imagery worldwide
- **Streets:** Includes highways, major roads, minor roads, one-way arrow indicators, railways, water features, cities, parks, landmarks, building footprints, and administrative boundaries, overlaid on shaded relief for added context

- **Topographic:** Includes cities, water features, physiographic features, parks, landmarks, highways, roads, railways, airports, and administrative boundaries, overlaid on land cover and shaded relief imagery for added context

Reference

The primary purpose of this group of layers is to provide supporting reference information and context for viewing in conjunction with the active layers. Reference layers may include administrative boundaries or natural resource layers.

To display or hide a reference layer, click on its row in the Map Themes list.

Map Tools

Explore the map layers in more detail and share information by using these map tools:



Identify: Identify the reference layers present at a specific point location.

Figure 6. Identify tool displaying layers at a specific point location



Measure: Measure distance, area, or perimeter in various units.

Figure 7. Measure tool displaying polygon area in acres and other unit options


 **Swipe:** Visually compare two layers by choosing a layer to swipe over another layer vertically, horizontally, or with a magnifying scope.



Figure 8. Swipe tool displaying horizontal swipe of Wildfire Hazard Potential and Burn Probability layers

 **Print:** Print current view by entering a Title and Subtitle and generating a map layout.



Figure 9. Entering a title and a subtitle for a map to be printed with the Print Map tool

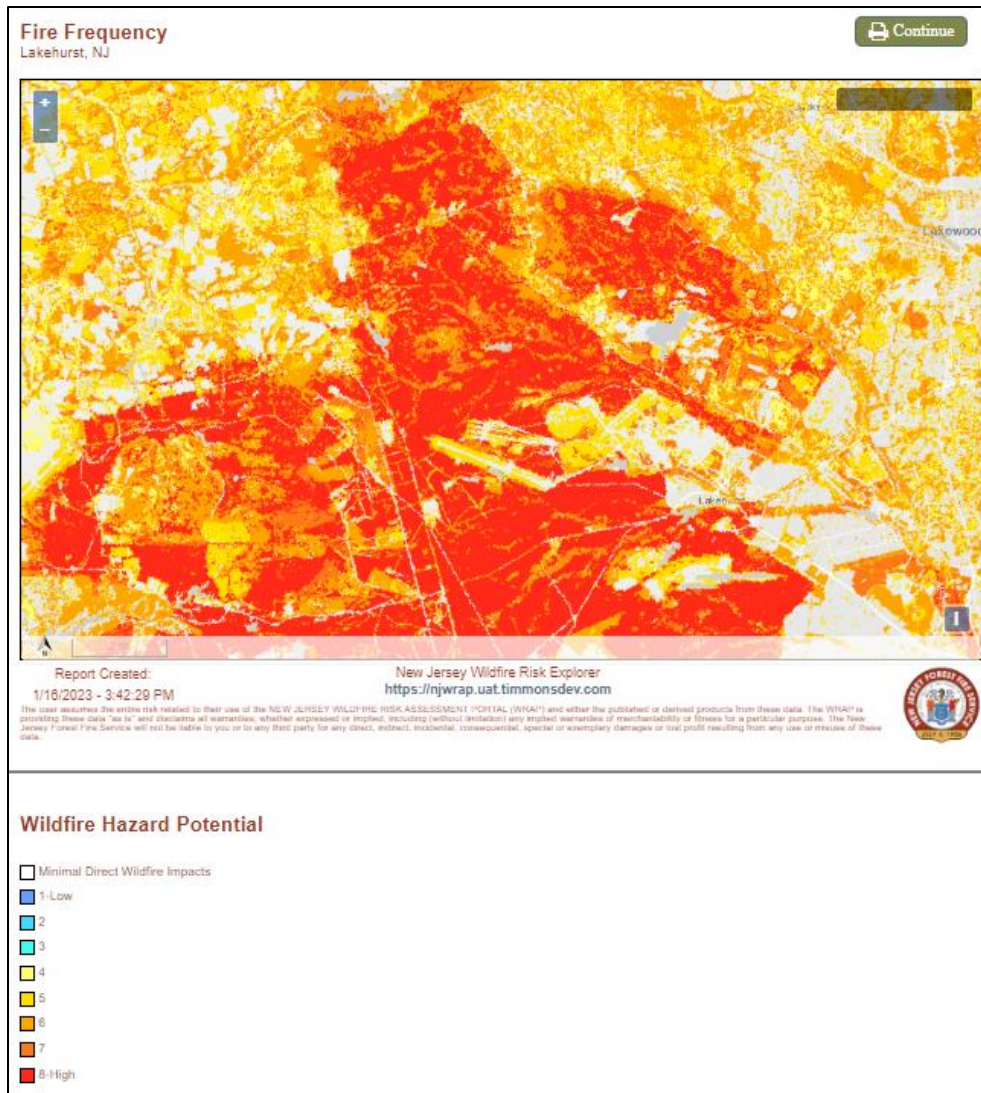


Figure 10. Map extent in printable layout

Assess Your Location

The **Assess Your Location** tool allows users to identify **Wildfire Risk** based on conditions derived from the Structure Exposure Score layer in the vicinity of the defined location, for any point of interest on the map. It is intended to inform home and business owners of their exposure to wildfire. This additional information allows mitigation planners to quickly identify areas where fire potential exists in relationship to homes and other valued assets.

To generate an Assessment Report for your location,

- Click **Assess Your Location** at the top left of the application.
- Use the search or **map** navigation tools to view a specific location on the map. Basic recommendations for preparedness are provided to the left of the map.
- Click **Download Report** beside the geographic coordinates.

Note: To obtain more detailed information, it is highly recommended users contact a qualified local mitigation planner.

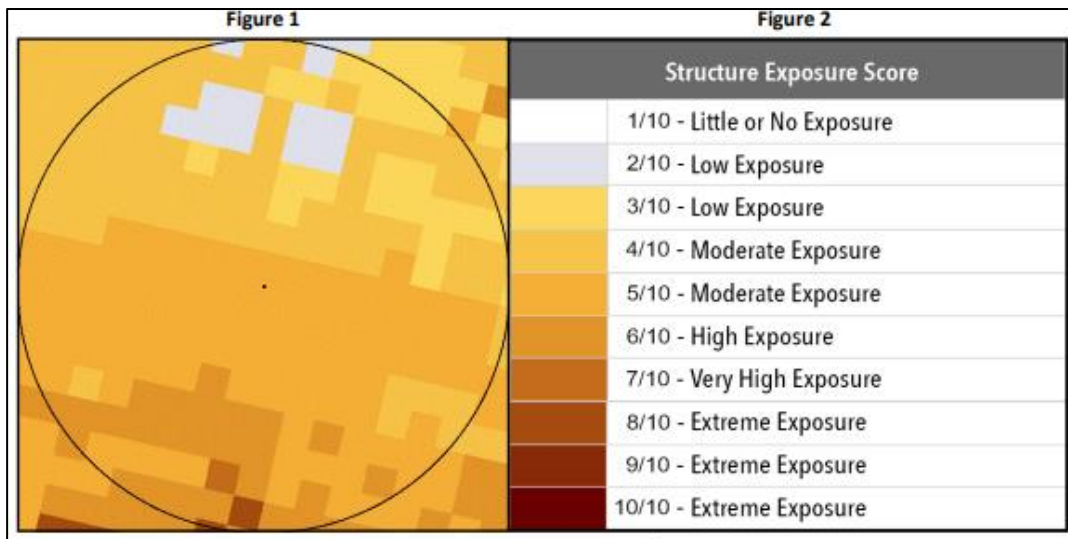


Figure 11. Part of a sample report that details Wildfire Exposure. The map centers at the selected location, while the chart displays the map's legend. The colors represent the categories of the Structure Exposure Score layer.

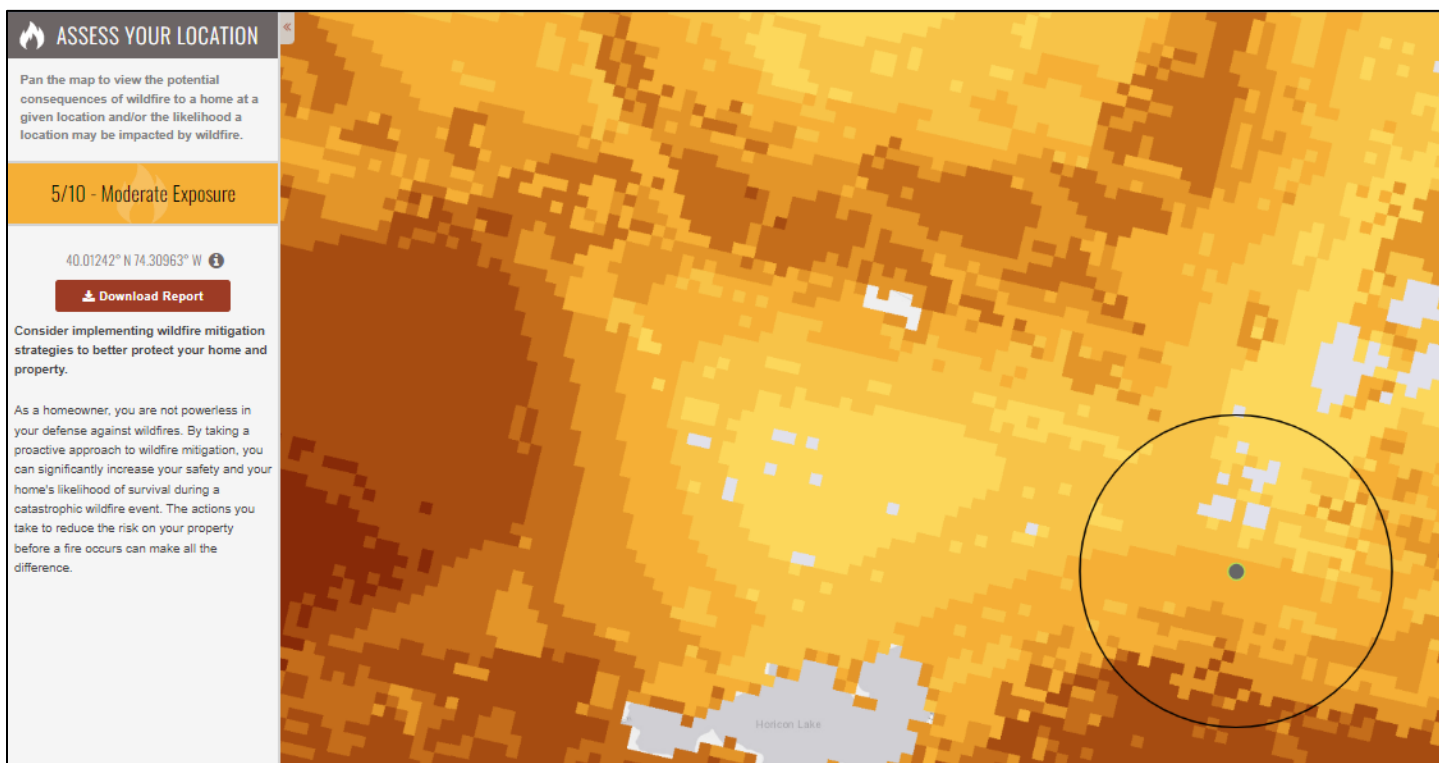


Figure 12. Assess Your Location tool with a location highlighted