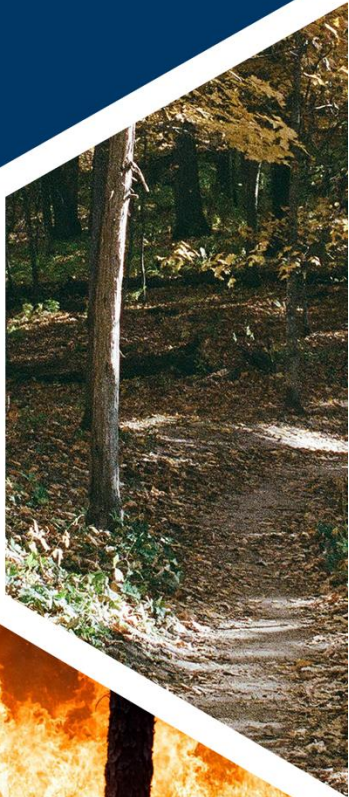


m DEPARTMENT OF
NATURAL RESOURCES
WILDFIRE RISK ASSESSMENT PORTAL
BASIC
USER GUIDE



Contents

Preface	3
Compatibility.....	3
Support	3
Feedback.....	3
Overview	3
Accessing the Basic Viewer	4
Using the Basic Viewer	4
Navigation.....	5
Map Themes	6
Layers	6
Basemaps.....	6
Reference.....	6
Map Tools.....	7
Identify.....	7
Measure.....	8
Swipe.....	9
Print	10
Assess Your Location.....	11

Preface

The Minnesota Wildfire Risk Assessment Portal's Risk Explorer Basic Viewer can be found at <https://minnesotawildfirerisk.com/> by selecting "Launch Risk Explorer." If you are interested in additional features, registration for the Advanced Viewer and approval by an administrator are required.

Compatibility

MN WRAP is accessible using Microsoft Edge, Mozilla Firefox, Google Chrome, or Apple Safari. It is recommended that Chrome be used with the application to optimize performance.

The minimum recommended screen resolution is 1024 x 768.

Support

The [Support](#) page is accessible from the homepage and provides access to documentation, reference information, and help desk contact information.

Feedback

The Minnesota Department of Natural Resources invites users to provide feedback on MN WRAP. Please provide your comments and suggestions for improvement via the [Contact](#) form.

Overview

The Minnesota Wildfire Risk Explorer (known as the "Risk Explorer") is the primary mechanism for the Minnesota DNR to deploy wildfire risk information and create awareness about wildfire issues across the state. This application is tailored to support specific workflow and information requirements for the public, local community groups, private landowners, government officials, hazard-mitigation planners, and wildland fire managers. The application also provides the baseline information needed to support mitigation and prevention efforts across the state.

- For more information about MN WRAP, visit the [Support](#) page.
- For more information about the functionalities and capabilities of the Basic Viewer and the Advanced Viewer, click the **Learn More about Basic vs. Advanced** link in the **Choose a Viewer** modal displayed once [Launch Risk Explorer](#) is selected.

	BASIC	ADVANCED
Assess wildfire risk at your location	✓	✓
Download a wildfire risk assessment report for your location	✓	✓
View wildfire map layers	✓	✓
Navigate the map and inspect pertinent geospatial data	✓	✓
Print maps of wildfire risk	✓	✓
Create and manage your areas of interest or project boundaries	✗	✓
Upload shapefiles representing your areas of interest or projects	✗	✓
Create an area of interest from an existing reference layer feature	✗	✓
Generate a risk summary report for an area of interest	✗	✓
Download an editable summary report to be used for Community Wildfire Protection Plan (CWPP) development	✗	✓
Export a map document and GIS data (Esri File Geodatabase) for your area of interest	✗	✓

Figure 1. Comparing the Basic and the Advanced Viewers

Accessing the Basic Viewer

To access MN WRAP's Risk Explorer Basic Viewer:

1. Open a compatible browser and navigate to <https://minnesotawildfirerisk.com/>.
2. Select **Launch Risk Explorer** and click **Enter** to access the **Basic Viewer**.

Alternatively, you have the option to register for an advanced user account by selecting **Create an Account**.

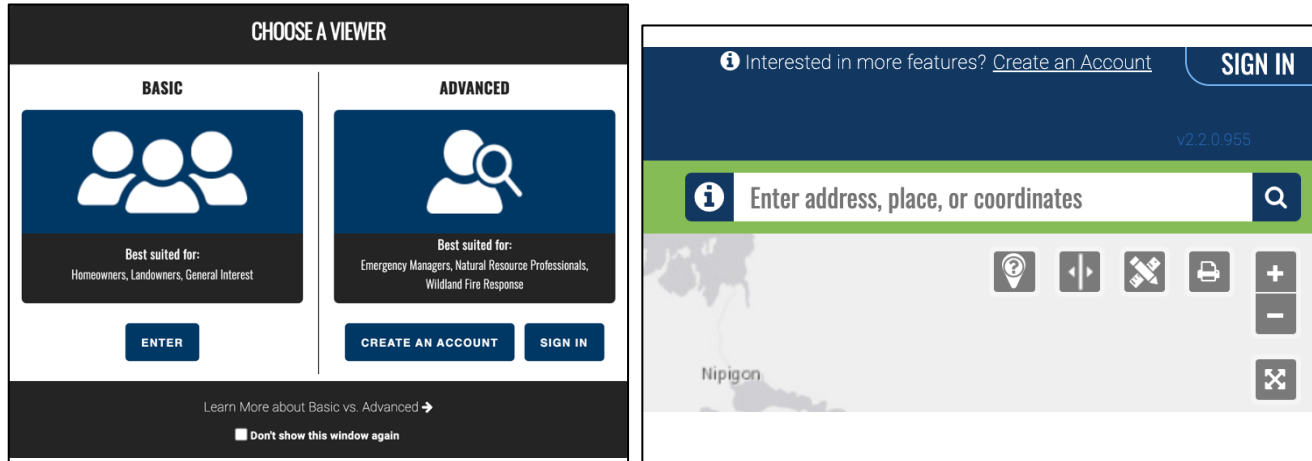
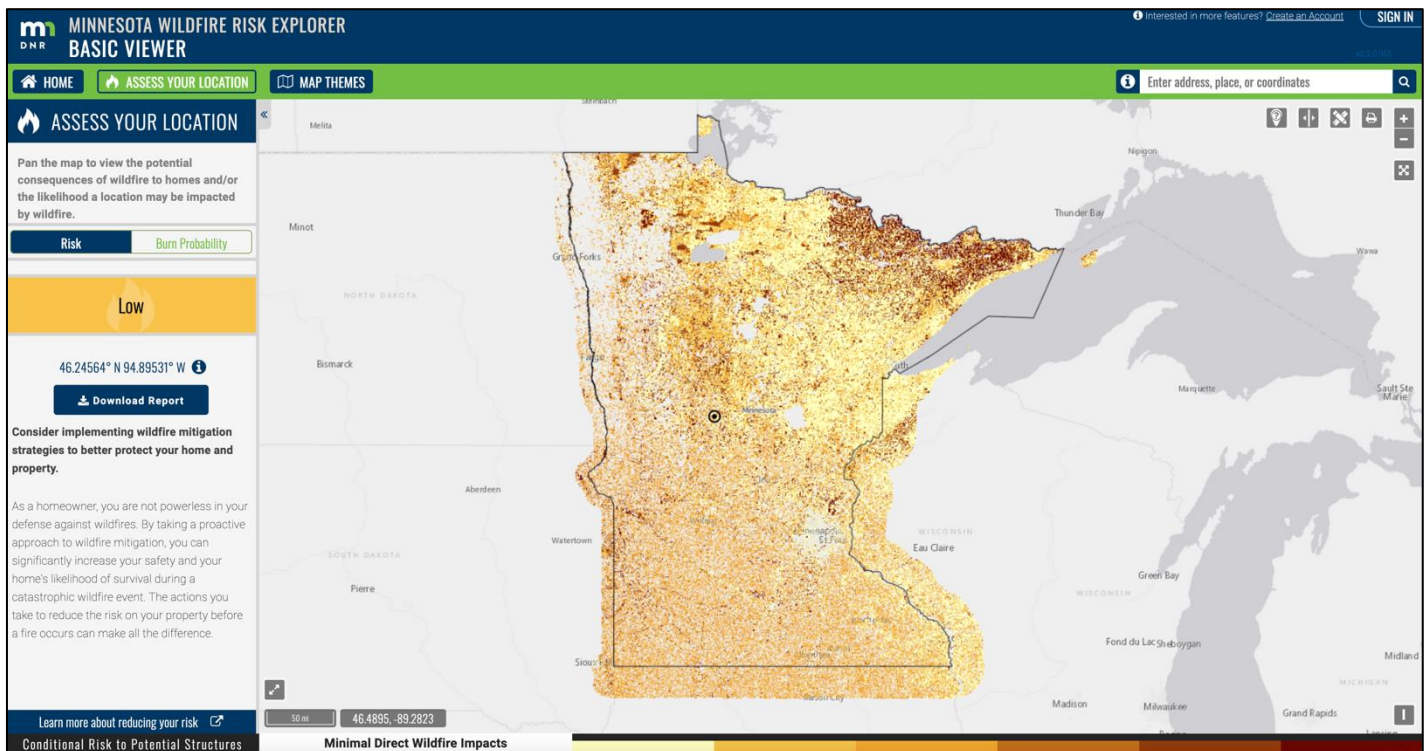


Figure 2. Accessing the Viewers

Using the Basic Viewer

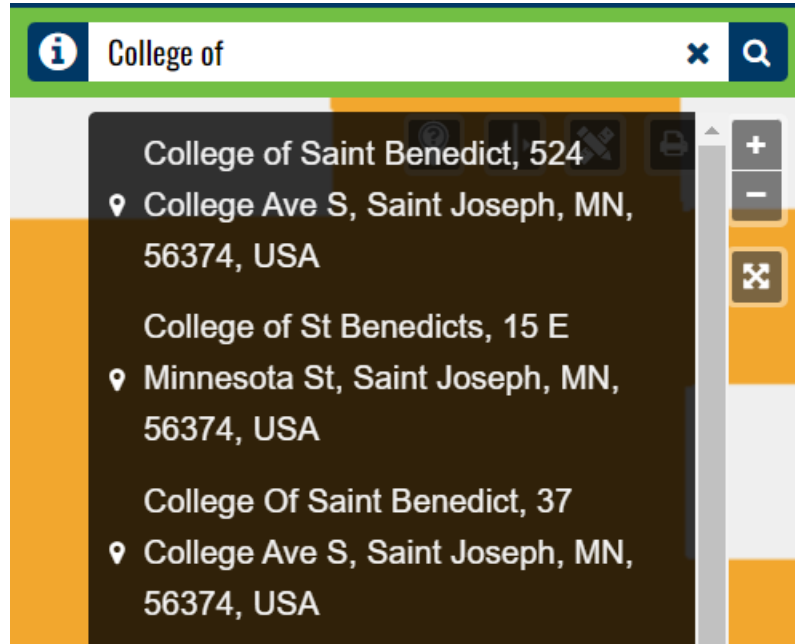
The **Basic Viewer** is a web-mapping application designed to let users zoom to a place of interest, explore map themes, and quickly identify areas where fire potential exists in relationship to homes or other valued assets. The featured tool in this application is **What's Your Risk**. It allows users to identify wildfire threat for any point of interest on the map.



Navigation

There are several ways to navigate the map. You can zoom to a specific location by entering an address or you can manually zoom around the map using the zoom buttons or your mouse.

1. Navigating to a Specific Location:



Use the address bar at the top of the screen to enter an address, location, or latitude/longitude coordinates. All places matching that location will be listed. Select from the results to zoom the map to that location.

These following formats are acceptable for latitude and longitude searches: Decimal Degrees, Degrees Minutes Seconds, and Degrees Decimal Minutes:

- -94.07 45.61
- 94.07W, 45.61N
- 94.07W 45.61N
- W94.07, N45.61
- X: -94 Y: 45.6
- -94.07, 45.61
- 94°07'.83533" W 45°61'22.37643" N
- -94°07'42.83533",45°61'22.37643"

To type the degree symbol (°)

- PC: [Alt + 0176] or [Alt + 248]
- Mac: [Option + Shift + 8]

2. Zooming and Panning:

Manually navigate by using the mouse or the navigation controls provided by the application:

- Navigation controls:



Zoom In/Out



Full extent

- Mouse controls:
 - Pan: Click and drag map
 - Incremental Zoom: Use mouse center scroll wheel
 - Zoom in and center: Double click the map

Map Themes

The Map Themes button allows you to view key maps spatial data layers associated with the Minnesota Wildfire Risk Assessment, basemaps, and reference data layers. They are organized in the left toolbar as follows:

Layers

The maps in this group are considered active map layers because you can only view one layer at a time – the one that is "active" or selected. To view and “active” layer, simply click on it to select it.

Click for a description of each layer.

Adjust the transparency of the layers group by using the transparency slider at the top of the group.

Turn layers on and off by clicking on the layer name or using the activate switch at the far right of the transparency slider.

Legends for all layers are available at the bottom of the page.

Basemaps

You can view different basemaps with the wildfire risk layers.

Several options exist:

- Light Gray
- Aerial
- Streets
- Topographic

To view a basemap, simply click on it to select it. Click for a description of each basemap.

Reference

The purpose of this group of layers is to provide supporting reference information and context for viewing in conjunction with the risk assessment layers. Reference layers may include administrative boundaries, public facilities, information related to wildfire suppression, mitigation and prevention, and other natural resource layers.

Click for a description of each layer.

Adjust the transparency of the reference layers group by using the transparency slider at the top of the group.

Turn each reference layer on and off by clicking on the layer name. You can also hide all layers by using the activate switch at the far right of the transparency slider.



Map Tools

Tools are provided that allow you to view and explore the map layers in more detail. These include:



Identify - use this tool to show the values of several map layers for a specific user defined location.



Measure – use this tool to measure distance or area on the map.



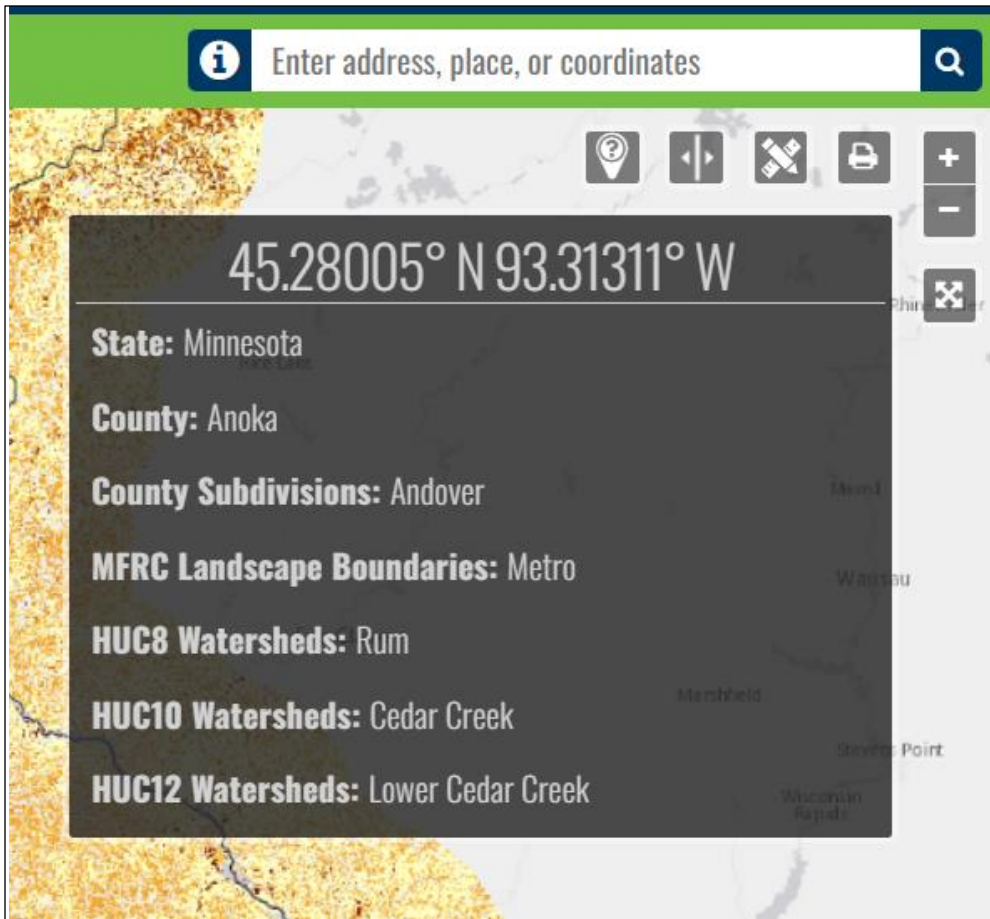
Swipe – use this tool to visually compare two layers by choosing a layer to swipe over the top of the active layer.



Print – use this tool to create a simple map matching the contents of your browser.

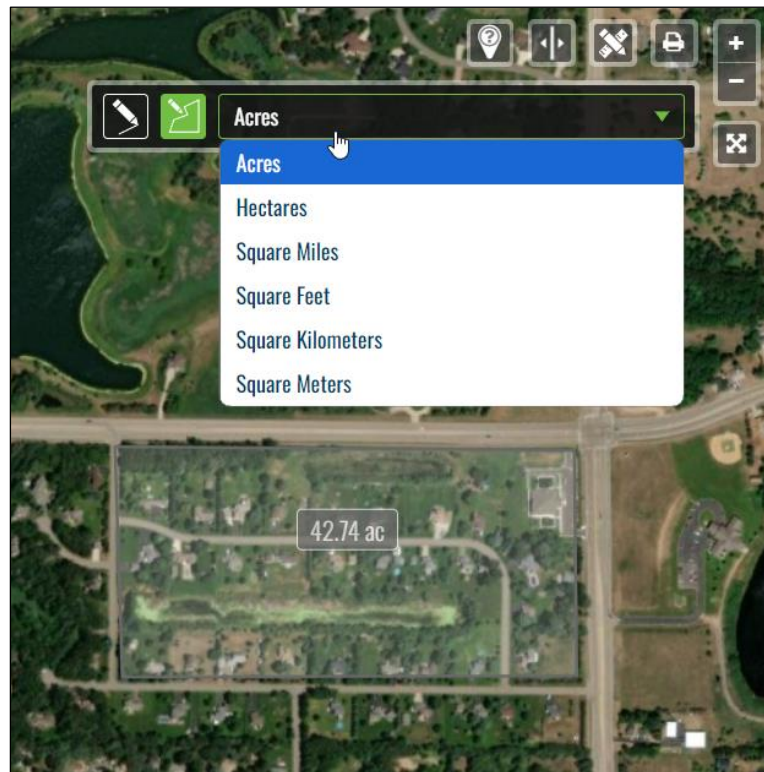
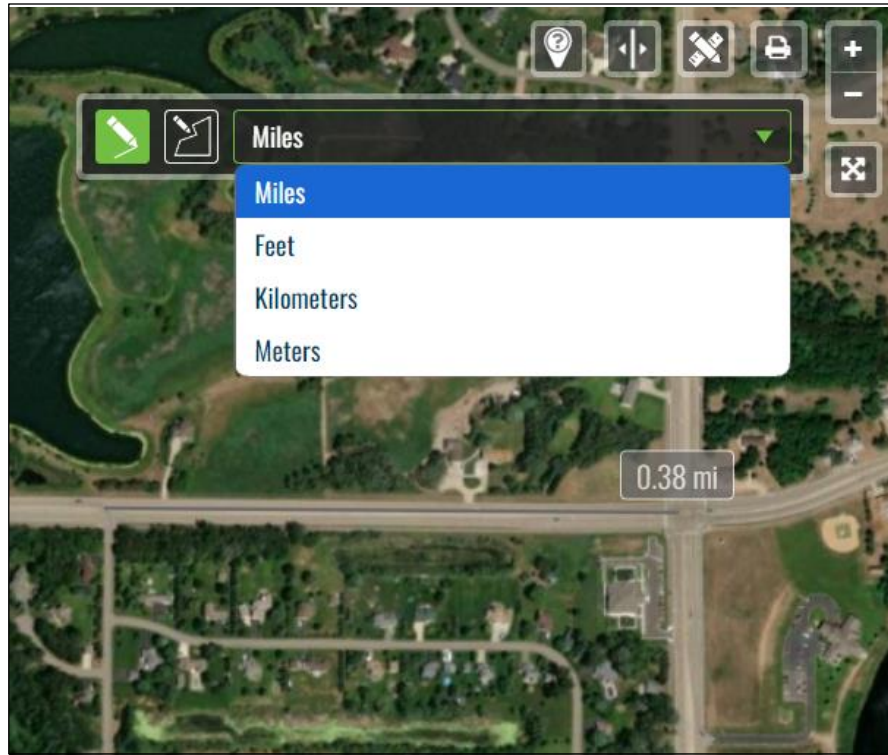
Identify

Click the Identify button to activate the tool. Click in a location of your interest in the map. Information displayed by the tool includes attributes from the layers listed under the Historical Wildfire Ignitions group and the majority of the reference layers for the selected location. Click the identify button to dismiss the window and disable the tool.



Measure

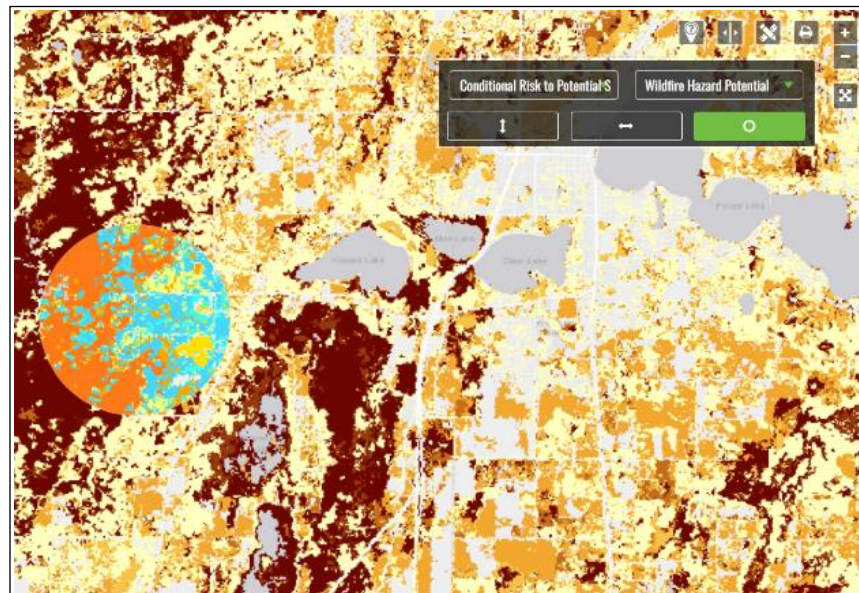
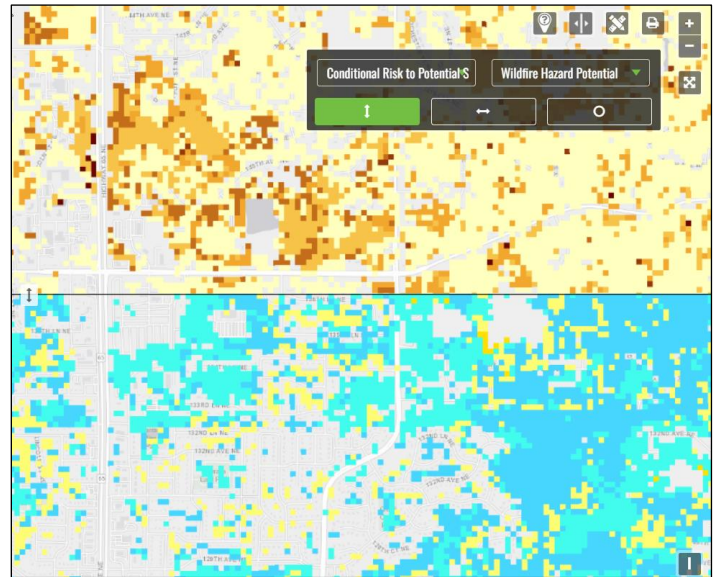
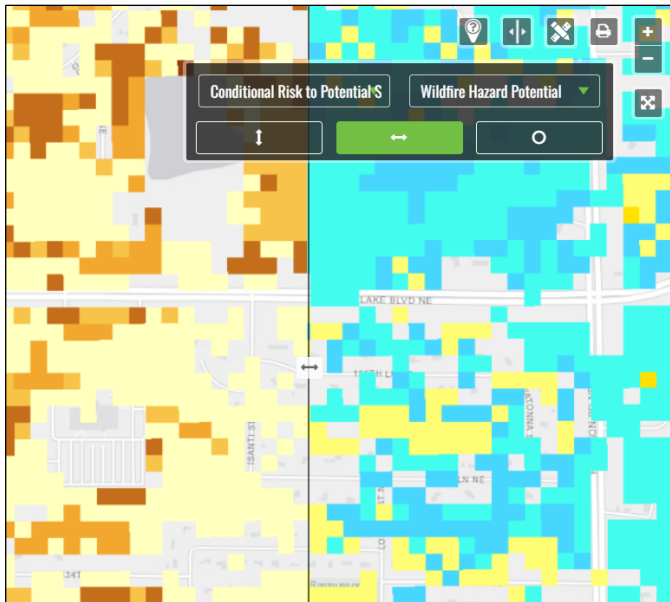
Click the Measure button to activate the tool. The measurement tools allow you to measure distance or area in the map. You may specify units using the dropdown menu. Units may be specified before or after measuring. Click the measure button to dismiss the window and disable the tool.



Swipe

Click the Swipe button to activate the tool. The Swipe tool can be used to compare one layer with another. The “bottom” layer is the active layer selected in Map Themes. You can also use the Tool dropdown to change select a different layer.

The “top” layer will be used as the “swipe” layer. The widget provides horizontal, vertical, and scope viewing modes. Click the swipe button to dismiss the window and disable swiping.



Print

The Print tool allows you to create a simple map matching the contents of the map. Click the Print button to open the Print Map window. You can enter a Title and Subtitle to customize it and/or click print to proceed.

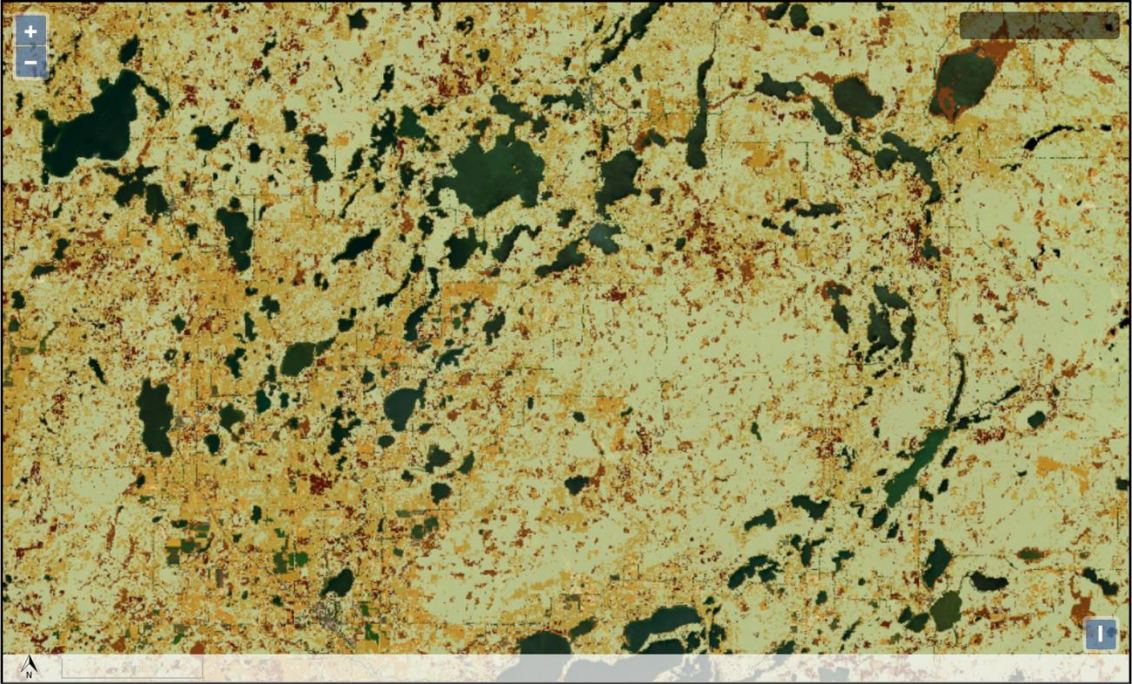
title

subtitle

PRINT MAP

The next window provides capabilities to zoom and pan the map prior to printing. Note the legend will always appear on the second page. Once you are ready to print the map click continue.


🖨️ Continue



Report Created:
9/9/2024 - 8:23:46 AM

The user assumes the entire risk related to their use of the MINNESOTA WILDFIRE RISK EXPLORER and either the published or derived products from these data. The MINNESOTA WILDFIRE RISK EXPLORER is providing these data "as is" and disclaims all warranties, whether expressed or implied, including (without limitation) any implied warranties of merchantability or fitness for a particular purpose. The Minnesota DNR will not be liable to you or to any third party for any direct, indirect, incidental, consequential, special or exemplary damages or lost profit resulting from any use or misuse of these data.

MINNESOTA WILDFIRE RISK EXPLORER
<https://wrap.minnesotawildfirerisk.com>



Assess Your Location

The **Assess Your Location** tool allows users to identify **Wildfire Risk** based on conditions derived from the wildfire risk layers in the vicinity of the defined location, for any point of interest on the map. It is intended to inform home and business owners of their exposure to wildfire. This additional information allows mitigation planners to quickly identify areas where fire potential exists in relationship to homes and other valued assets.

To generate an Assessment Report for your location,

- Click **Assess Your Location** at the top left of the application.
- Use the search or **map** navigation tools to view a specific location on the map. Basic recommendations for preparedness are provided to the left of the map.
- Click **Download Report** beside the geographic coordinates.

Note: To obtain more detailed information, it is highly recommended users contact a qualified local mitigation planner.

